

GENERAL SERVICES ADMINISTRATION
FEDERAL SUPPLY SERVICE
AUTHORIZED FEDERAL SUPPLY SCHEDULE CATALOG/PRICE LIST

MAS – Multiple Award Schedule



Davidson Shoes, Inc.

153 S. Main Street • Canandaigua, NY 14424
P. 585-394-5417 • F. 585-394-8031

Contract Number: GS-07F-5883P
Contract Period: July 01, 2004 through June 30, 2024
Pricelist Version: PO-0114 dated August 03, 2020
FSC/PSC: 8430
DUNS: 013438445
WEB: www.shoestoboot.com/gsa
Business size: Small

Awarded SIN	Description
316210	Footwear
OLM	Order-Level Materials (OLM)

NAICS: [315999 Other Apparel Accessories and other Apparel Manufacturing](#)

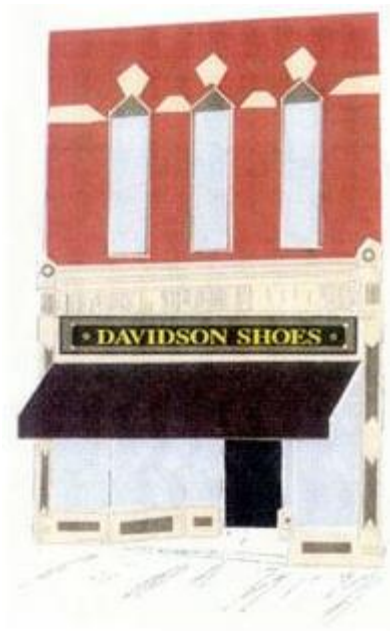
Contact for Contract Administration:

Mark Hogan, President/CEO, markhogan@frontiernet.net

On-line access to contract ordering information, terms and conditions, up-to-date pricing, and the option to create an electronic delivery order is available through **GSA Advantage!**, a menu-driven database system. The INTERNET address for **GSA Advantage!** is <http://www.gsaadvantage.gov>

For more information on ordering from Federal Supply Schedules click on the GSA Schedules link at fss.gsa.gov

About Us



We have been providing quality products and superior service from the same location since 1984.

Davidson Shoes obtained our GSA Contract # GS-07F-5883P in 2004 and has been servicing the needs of Federal, State and Local Governments ever since.

For products and service, you can depend on, contract Davidson Shoes, Inc. at www.GSABoots.com or 585-394-5417. You can be confident that when you place an order with us, we will meet your high expectations.

Customer Comments

I am the Director of Customer Service with an industrial manufacturing company. I just want to complement you and Kathy on excellent service in a very efficient and personal way. Thanks.

~ J. Kraus

Thank you for your wonderful service and quick shipping to my daughter's abode, awaiting my bare feet upon my Christmas arrival. Having returned home to Boise, I find my new footwear even better than expected.

It's always somewhat frightening to shop long distance, given all the horror stories, but you are a top-notch outfit, and I will keep your catalog on file, as well as your email address and web site.

Thank you VERY much.

~ M. Parsons

I wanted to take a moment to thank you for your GREAT website. So many great shoes to choose from, some of them really hard to find in the "real" world.

~ D. Orneallas

The design of your web page is great. It is much faster and more intuitive to use than many.

~ C. Bruml

TABLE OF CONTENTS

1a.	TABLE OF AWARDED SPECIAL ITEM NUMBERS (SINs):.....
1b.	LOWEST PRICED MODEL NUMBER AND PRICE FOR EACH SIN:
1c.	HOURLY RATES: (Services Only):.....
2.	MAXIMUM ORDER*:.....
3.	MINIMUM ORDER:.....
4.	GEOGRAPHIC COVERAGE:.....
5.	POINT(S) OF PRODUCTION:.....
6.	DISCOUNT FROM LIST PRICES:.....
7.	QUANTITY DISCOUNT(S):.....
8.	PROMPT PAYMENT TERMS:.....
9A.	GOVERNMENT PURCHASE CARDS MUST BE ACCEPTED AT OR BELOW THE MICRO-PURCHASE THRESHOLD.
9B.	GOVERNMENT PURCHASE CARDS ARE ACCEPTED ABOVE THE MICRO-PURCHASE THRESHOLD.
10.	FOREIGN ITEMS:.....
11a.	TIME OF DELIVERY:
11b.	EXPEDITED DELIVERY:.....
11c.	OVERNIGHT AND 2-DAY DELIVERY:
11d.	URGENT REQUIRMENTS:.....
12.	FOB POINT:.....
13a.	ORDERING ADDRESS:.....
13b.	ORDERING PROCEDURES:
14.	PAYMENT ADDRESS:.....
15.	WARRANTY PROVISION:.....
16.	EXPORT PACKING CHARGES:.....
17.	TERMS AND CONDITIONS OF GOVERNMENT PURCHASE CARD ACCEPTANCE:.....
18.	TERMS AND CONDITIONS OF RENTAL, MAINTENANCE, AND REPAIR (IF APPLICABLE):
19.	TERMS AND CONDITIONS OF INSTALLATION (IF APPLICABLE):.....
20.	TERMS AND CONDITIONS OF REPAIR PARTS INDICATING DATE OF PARTS PRICE LISTS AND ANY DISCOUNTS FROM LIST PRICES (IF AVAILABLE):.....
20a.	TERMS AND CONDITIONS FOR ANY OTHER SERVICES (IF APPLICABLE):.....
21.	LIST OF SERVICE AND DISTRIBUTION POINTS (IF APPLICABLE):.....
22.	LIST OF PARTICIPATING DEALERS (IF APPLICABLE):.....
23.	PREVENTIVE MAINTENANCE (IF APPLICABLE):.....
24a.	SPECIAL ATTRIBUTES SUCH AS ENVIRONMENTAL ATTRIBUTES.....
24b.	SECTION 508 COMPLIANCE FOR EIT:.....
25.	DUNS NUMBER:.....
26.	NOTIFICATION REGARDING REGISTRATION IN SYSTEM FOR AWARD MANAGEMENT (SAM) DATABASE:

1a. TABLE OF AWARDED SPECIAL ITEM NUMBERS (SINs):

SIN	Description
316210	Footwear
OLM	Order-Level Materials (OLM)

1b. LOWEST PRICED MODEL NUMBER AND PRICE FOR EACH SIN:

SIN	MFG. Name	Number	Description	Price
316210	Bates	742	E00742 Women's Bates DuraShocks® Black	\$95.17
OLM	N/A	N/A	N/A	N/A

1c. HOURLY RATES: (Services Only):

Not Applicable

2. MAXIMUM ORDER*:

SIN	Amount
316210	\$250,000
OLM	N/A

*If the best value selection places your order over the Maximum Order identified in this catalog/pricelist, you have an opportunity to obtain a better schedule contract price. Before placing your order, contact the aforementioned contactor for a better price. The contractor may (1) offer a new price for this requirement (2) offer the lowest price available under this contract or (3) decline the order. A delivery order that exceeds the maximum order may be placed under the schedule contract in accordance with FAR 8.404.

3. MINIMUM ORDER:

\$100.00

4. GEOGRAPHIC COVERAGE:

Delivery within 48 contiguous states & Washington, D.C., domestic delivery also includes a port or consolidation point, within the aforementioned areas, for orders received from overseas activities. Overseas destination are F.O.B. Inland Carrier, Point of Exportation.

5. POINT(S) OF PRODUCTION:

Davidson Shoes, Inc.
153 S. Main Street
Canandaigua, NY 14424 (Ontario County)

6. DISCOUNT FROM LIST PRICES:

Prices are listed as GSA Net, Discount Deducted and IFF included.

7. QUANTITY DISCOUNT(S):

Bates, Chippewa, Danner, Carolina, Wesco,
La Sportiva

Quantity	Discount
25 – 59 Pairs	14%
60 – 99 Pairs	15%
100 – 199 Pairs	16%
200 and Up	17.5%

Corcoran & Matterhorn

SIN	Discount
6 – 11 Pairs	16%
12 – 24 Pairs	17%
25 -59 Pairs	18%
60 – 99 Pairs	19%
100 – 199 Pairs	20%
200 – 399 Pairs	21%
400 & Up	22%

No Quantity Discounts for: Cosmas, Converse, Zamberlan, Hoffman, ASOLO, Belleville, Iowa, Nick's Boots, Wellco, Rocky, Weinbrenner/Thorogood, Novation North America, Inc.-Kayland, Scarpa

8. PROMPT PAYMENT TERMS:

Net 30. Prompt Payment terms cannot be negotiated out of the contractual agreement in exchange for other concessions.

9A. GOVERNMENT PURCHASE CARDS MUST BE ACCEPTED AT OR BELOW THE MICRO-PURCHASE THRESHOLD.

Yes. Government Purchase Cards are accepted at or below the micro-purchase threshold.

9B. GOVERNMENT PURCHASE CARDS ARE ACCEPTED ABOVE THE MICRO-PURCHASE THRESHOLD.

Yes. Government Purchase Cards are accepted above the micro-purchase threshold.

10. FOREIGN ITEMS:

MFG. Name	COO
ASOLO	Romania
Converse	Puerto Rico
Cosmas	Romania
Kayland	Italy, Romania
La Sportiva	Italy
Lowa	Czech Republic, Germany
Scarpa	Italy
Zamberlan	Italy

11a. TIME OF DELIVERY:

Shipped 21 Days ARO; Belleville Only: 7 Days ARO

11b. EXPEDITED DELIVERY:

All items are generally available for expedited delivery. The Ordering Activity may contact Davidson Shoes for the additional shipping rates that apply to Expedited Delivery.

11c. OVERNIGHT AND 2-DAY DELIVERY:

Services that can be provided on an overnight and 2-day delivery schedule will be provided in accordance with the terms and conditions negotiated for that delivery and specified in the task order, or task order modification.

11d. URGENT REQUIREMENTS:

Customers are encouraged to contact the contractor for the purpose of requesting accelerated delivery.

12. FOB POINT:

Products - Origin

13a. ORDERING ADDRESS:

Davidson Shoes, Inc.
153 S. Main Street
Canandaigua, NY 14424 (Ontario County)

13b. ORDERING PROCEDURES:

For supplies and services, the ordering procedures, information on Blanket Purchase Agreements (BPA's) are found in FAR 8.405-3

14. PAYMENT ADDRESS:

Davidson Shoes, Inc.
153 S. Main Street
Canandaigua, NY 14424 (Ontario County)

15. WARRANTY PROVISION:

Merchandise must have been purchased from Davidson Shoes plus within the last 60 days. Reference Attachment 1.

16. EXPORT PACKING CHARGES:

N/A

17. **TERMS AND CONDITIONS OF GOVERNMENT PURCHASE CARD ACCEPTANCE:**
Yes. Any thresholds above the micropurchase threshold.
18. **TERMS AND CONDITIONS OF RENTAL, MAINTENANCE, AND REPAIR (IF APPLICABLE):**
N/A
19. **TERMS AND CONDITIONS OF INSTALLATION (IF APPLICABLE):**
N/A
20. **TERMS AND CONDITIONS OF REPAIR PARTS INDICATING DATE OF PARTS PRICE LISTS AND ANY DISCOUNTS FROM LIST PRICES (IF AVAILABLE):**
Davidson Shoes, Inc.
153 S. Main Street
Canandaigua, NY 14424 (Ontario County)
- 20a. **TERMS AND CONDITIONS FOR ANY OTHER SERVICES (IF APPLICABLE):**
N/A
21. **LIST OF SERVICE AND DISTRIBUTION POINTS (IF APPLICABLE):**
N/A
22. **LIST OF PARTICIPATING DEALERS (IF APPLICABLE):**
N/A
23. **PREVENTIVE MAINTENANCE (IF APPLICABLE):**
N/A
- 24a. **SPECIAL ATTRIBUTES SUCH AS ENVIRONMENTAL ATTRIBUTES**
(e.g. recycled content, energy efficiency, and/or reduced pollutants):
N/A
- 24b. **SECTION 508 COMPLIANCE FOR EIT:**
The EIT Standards can be found at: www.section508.gov/
25. **DUNS NUMBER:**
013438445
26. **NOTIFICATION REGARDING REGISTRATION IN SYSTEM FOR AWARD MANAGEMENT (SAM) DATABASE:**
Contractor has an Active Registration in the SAM database.

Attachment 1

Warranty Provisions

Warranty:

All merchandise is warranted against manufacturer defects for 60 days, from date of receipt.

Defective Merchandise:

All merchandise thought to be defective must have a *Return Authorization # (R.A.)*

1. Please call 1-877-427-9333 to obtain return instructions for any merchandise thought to be defective.
2. Merchandise will be inspected and evaluated, replaced, repaired or returned in a timely manner.
3. Remember to insure the package as we are not responsible for lost, damaged, or stolen merchandise.

Return Policy:

Merchandise must have been purchased from Davidson Shoes Plus within the last 60 days.

Returns will be accepted only with prior written permission. Return Authorization can be obtained by contacting customer service, 877-427-9333.

Sizing and Size Conversions:

We are not responsible for your size selection or any freight charges for non-defective return shoes.

Unworn Footwear:

All returned merchandise must be:

- o Unworn, unused and in resalable condition in the original packaging (shoe box)
- o In a protective shipping carton or in brown wrapping paper (\$5.00 reboxing fee if sent otherwise)
- o Returned within 30 days from the day it was received
- o NO returns after 60 days. (absolutely no exceptions)
- o Sent to Davidson Shoes, 153 South Main St., Canandaigua N.Y. 14424
- o We are not responsible for lost, damaged, or stolen merchandise.

Note: Refunds will be given on Merchandise Only. Original Shipping charges will not be refunded.

Worn Footwear:

May not be returned because:

- o It does not fit right
- o You do not find it comfortable
- o It has been mistreated or abused

Canceling and Order:

Freight charges will be assessed if an order in transit is canceled or refused.

Contesting a charge on your Credit Card Bill:

Contesting a charge to your credit card company or issuing bank may result in a \$25.00 service charge. Please call **585-394-5417** to resolve ANY billing questions.

SIN	MFG Name	MFG. Number	Product Name	Product Description	Sizes Available	GSA Net Price	COO
316210	ASOLO	A01020	Alta Via GV -Technical Alpine Boots - Black Green	ASOLO Alta Via was developed for professional climbers who demand the finest in technical performance and innovation.	8-12,13	\$360.72	RO
316210	ASOLO	OM2200-450	ASOLO PowerMatic 200 GV- Backpacking Boots - Mens Medium	UPPER Water-resistant full grain leather 2.6-2.8 mm, Gore-Tex; SOLE Power Matic. Rubber bottom Asolo/Vibram - Midsole in PU triple-density; WEIGHT Gr 785 (1/2 pair size 9 US)	7-12,13,14,15	\$255.98	RO
316210	ASOLO	OM2210-450	ASOLO PowerMatic 200 GV- Backpacking Boots - Mens Wide	UPPER Water-resistant full grain leather 2.6-2.8 mm, Gore-Tex; SOLE Power Matic. Rubber bottom Asolo/Vibram - Midsole in PU triple-density; WEIGHT Gr 785 (1/2 pair size 9 US)	7-12,13,14,15	\$255.98	RO
316210	ASOLO	OM3400-508	Fugitive GTX Backpacking boots - Wool / Black MEDIUM Width Width	Asolo Fugitive GTX - The Asolo Men's Fugitive GTX® Backpacking Boots are an ideal choice for light hikers and trekkers who demand performance and comfort. With Water-Resistant Suede + Cordura Uppers and GORE-TEX® performance comfort footwear lining the Fugitive will keep out the elements. The Duo Asoflex Last is the synthesis of Asolo's research; two elements are melted together to improve comfort and performance. The first element, constructed of a stiff material benefits anti- pronation, anti-supination and anti-tors	7-12,13,14	\$197.79	RO
316210	ASOLO	OM3400-856	Fugitive GTX Backpacking boots - Black / Gunmetal - Medium width	Asolo Fugitive GTX - The Asolo Men's Fugitive GTX® Backpacking Boots are an ideal choice for light hikers and trekkers who demand performance and comfort. With Water-Resistant Suede + Cordura Uppers and GORE-TEX® performance comfort footwear lining the Fugitive will keep out the elements. The Duo Asoflex Last is the synthesis of Asolo's research; two elements are melted together to improve comfort and performance. The first element, constructed of a stiff material benefits anti- pronation, anti-supination and anti-tors	7-12,13,14	\$197.79	RO
316210	ASOLO	OM3440-508	Fugitive GTX Backpacking boots - Wool / Black WIDE	Asolo Fugitive GTX - The Asolo Men's Fugitive GTX® Backpacking Boots are an ideal choice for light hikers and trekkers who demand performance and comfort. With Water-Resistant Suede + Cordura Uppers and GORE-TEX® performance comfort footwear lining the Fugitive will keep out the elements. The Duo Asoflex Last is the synthesis of Asolo's research; two elements are melted together to improve comfort and performance. The first element, constructed of a stiff material benefits anti- pronation, anti-supination and anti-tors	7-12,13,14	\$197.79	RO
316210	ASOLO	OM4002	AFS8000- Mountaineering Boots -Black Yellow	Asolo 8000 Mens Mountaineering Boots - The Asolo AFS 8000 is a men's mountaineering boot made by Asolo. It is one of the top Mountaineering Boots you can get.	8-12,13	\$422.78	RO
316210	Bates	940	940 Bates Men's High Gloss Lites Uniform Shoes	Upper: Black Hi-gloss, Man Made;Upper Lining: DriLex Camo w/098 FM Black spun, Insole Insert: Tentex® covered polyurethane , Insole: 5 Iron Texon®, Shank: Fiberglass, Welt: Goodyear Storm Welt, Outsole: Polyurethane-Oil resisting; Skid resistant;Non marking	D, E 6-12, 13 EEE-7-12,13	\$114.22	US
316210	Bates	11	E00011 Men's Bates Lites™ High Gloss Co	Bates Lites™ Cordovan High gloss Uniform Oxford,oil resistant polyurethane outsole, Goodyear welt construction, removable full cushion dual density polymer footbed, Cambrelle® lining	D 7-12,13 E 7-12,13 EEE 7-12,13	\$102.42	US
316210	Bates	131	E00131 Men's Bates Lites™ White Leather	Bates Lites™ White Uniform Oxford,oil resistant polyurethane outsole, Goodyear welt construction, removable full cushion dual density polymer footbed, Cambrelle® lining	C 9-12,13 D 6-12,13,14 D,E,EEE 6-12,13,14,15	\$118.75	US
316210	Bates	1421	US Navy Suede Steel Toe-Mens	* Bates DuraShocks® Comfort Technology * Dri-Lex® Lining * Removable Insole * Vibram® Extreme Rubber Lug Outsole * Steel Toe ASTM F2413-05 Rated * Direct Attach Construction * Wolverine Warrior Leather® * Slip Resistant	M 6-12,13,14,15; EW 6-12,13,14	\$273.81	US
316210	Bates	1500A	E01500 Men's 8" Black Infantry Combat	8" Full grain leather; fire retardant upper materials, Gore-Tex® waterproof membrane,Vibram® Sierra outsole, boots	M 7-12,13,14,15 EW 7-12,13,14,15	\$261.11	US
316210	Bates	1523	E01523 Men's Bates DuraShocks® Black 6	6" Bates® safety toe boot. Vibram Extreme outsole, Bates DuraShocks® technology/direct attach construction. Full grain leather upper, removable full cushion dual density footbed. The Steel Toe ANSI Z41 P199 I/75 C/75.	N 9-12,13,14,15 M 6-12,13,14,15 EW 6-12,13,14,15	\$163.18	US
316210	Bates	1621	9" US Navy Durashock Steel Toe Mens Blac	Bates Dura Shocks Comfort Technology, Removable insole, Cushioned Midsole, Slip Resistant Vibram Extreme Rubber Outsole, Steel Toe ASTM F2413-05 Rated, Direct Attach Construction	N 9-12,13,14,15; M 6-12,13,14,15, EW 6-12, 13, 14, 15	\$241.16	US
316210	Bates	1728	E01728 Women's Bates DuraShocks® Steel	Womens: Warrior Leather/Nylon, Bates Durashock Vibram Bob rubber outsole, ANSI Steel Toe Boots	M5-10,11 ;W5-10,11	\$172.25	US
316210	Bates	1766	E01766 Women's Bates DuraShocks® Black	Womens 6" Bates® safety toe boot. Vibram Extreme outsole, Bates DuraShocks® technology/direct attach construction. Full grain leather upper, removable full cushion dual density footbed. The Steel Toe ANSI Z41 P199 I/75 C/75.	M and W 4-11,12; EW5-10,11	\$156.83	US
316210	Bates	1778	US Navy Suede Steel Toe-Womens	* Bates DuraShocks® Comfort Technology * Dri-Lex® Lining * Removable Insole * Vibram® Extreme Rubber Lug Outsole * Steel Toe ASTM F2413-05 Rated * Direct Attach Construction * Wolverine Warrior Leather® Slip Resistant	M / W 4-11	\$273.81	US
316210	Bates	1788	9" US Navy Durashock Steel Toe Womens	Bates Dura Shocks Comfort Technology, Removable insole, Cushioned Midsole, Slip Resistant Vibram Extreme Rubber Outsole, Steel Toe ASTM F2413-05 Rated, Direct Attach Construction	M 4-11, 12; W 4 -11,12; EW 5 -10,11	\$241.16	US
316210	Bates	3600	3600 Tora Bora Alpine Boot	The 3600 Tora Bora™ Alpine Boot from Bates uses cutting-edge technology and premium-grade materials for excellent performance across a range of temperatures and fierce environments. This technical boot features a Wolverine Warrior Leather™ and Superfabric® upper with an antimicrobial X-Static® lining, GORE-TEX® and 200 grams of Thinsulate insulation provide waterproof warmth and protection against the elements. The rubber Vibram® Alpine conquers deep snow pack, desert sand, muddy slopes, and rock face; it is also crampon compatible for snow and ice.	M, W 7-12,13,14	\$346.35	US
316210	Bates	53	E00053 Men's Bates Lites™ Padded Collar	Bates Lites™ padded collar uniform 3 eyelet chukka boots, high gloss upper, oil/slip resistant polyurethane outsole, Goodyear welt construction.	D 6.5-12,13 E 7-12,13 EEE 7-12	\$113.30	US
316210	Bates	7	E00007 Men's Premium High Gloss Black	Bates® uniform oxford, high gloss upper, leather outsole, Goodyear welt construction, Cambrelle® lining.	C 9-12,13 D 6-12,13,14 E 6-12,13,14 EEE 7-12,13	\$109.68	US

SIN	MFG Name	MFG. Number	Product Name	Product Description	Sizes Available	GSA Net Price	COO
316210	Bates	710	710 Sage Green USAF Safety Boots - Women	Sage Green Cowhide Flesh Out Leather with 1000 D/NIR Special Reflective Requirements Steel Toe Rated ASTM F2413-05 Durashocks 2 with Dual Density Polyurethane and Shocks Absorbing Heel and Forepart pads, Made in USA - Womens	Womens M: 5-10,11 W: 5-10,11	\$164.09	US
316210	Bates	7131	E00932 Womens Bates Lites™ White Leathe	Bates Lites™ White Uniform Oxford, White oil resistant polyurethane outsole, Goodyear welt construction, removable full cushion dual density polymer footbed, Cambrelle® lining	M and Wide 4-11,12;EW 6-11	\$115.12	US
316210	Bates	718	E00718 Women's Bates DuraShocks® 8"	Bates DuraShocks® tropical 8" uniform bootsm, full grain leather/abrasion resistant Cordura® fabric upper, steel toe ANSI Z41 PT99 I/75, electrical hazard	M 5-10,11 W 5-10,11	\$140.51	US
316210	Bates	724	E00724 Women's Bates DuraShocks® 8" Steel Toe	Bates DuraShocks® tropical 8" Steel Toe uniform bootsm, full grain leather/abrasion resistant Cordura® fabric upper.	M 5-10,11 W 5-10,11	\$131.44	US
316210	Bates	725	E00725 Women's Bates DuraShocks® Black	Bates DuraShocks® tactical 8"Steel Toe uniform boots, full grain leather upper, steel toe ANSI Z41 PT99 I/75 C75, Electrical Hazard	M 5-10,11 W 5-10,11	\$158.64	US
316210	Bates	742	E00742 Women's Bates DuraShocks® Black	Womens Bates DuraShocks® uniform oxford,high gloss uppers, DuraShocks®, Cambrelle® lining	N 6-11,12 M 4-11,12 W 4-11,12 EW 6-11	\$95.17	US
316210	Bates	752	E00752 Women's Bates DuraShocks® Black	Womens Bates DuraShocks® uniform oxford, black leather uppers, DuraShocks®, Cambrelle® lining	N 6-11,12 M 4-11,12 W 4-11,12 EW 6-11	\$109.68	US
316210	Bates	83	E00083 Men's Bates Lites™ Buckle Black	Bates Lites™ traditional buckle uniform 3 eyelet chukka, full grain leather upper, oil/slip resistant polyurethane outsole, goodyear welt construction, Cambrelle® lining,	D 7-12,13 E 7-12,13 EEE 7-12,13	\$135.00	US
316210	Bates	910	910 Sage Green USAF Safety Boots - Mens	Sage Green Cowhide Flesh Out Leather with 1000 D/NIR Special Reflective Requirements Steel Toe Rated ASTM F2413-05 Durashocks 2 with Dual Density Polyurethane and Shocks Absorbing Heel and Forepart pads Made in USA - Mens	Mens M: 5-10,11 W: 5-10,11	\$164.09	US
316210	Bates	918	E00918 Men's Bates DuraShocks® Black 8	DuraShocks® tropical 8"boots, full grain leather/abrasion resistant Cordura® fabric upper, Steel toe ANSI rated Z41 PT99 I/75 C/75. .	M 7-12, 13, 14, 15 EW 7-12, 13, 14, 15	\$142.32	US
316210	Bates	922A	E00922 Men's Bates DuraShocks® Black 8"	DuraShocks® tropical 8"boots, full grain leather/abrasion resistant Cordura® fabric upper.	M 7-12, 13, 14, 15 EW 7-12, 13, 14, 15	\$140.51	US
316210	Bates	925	E00925 Men's Bates DuraShocks® Black 8"	DuraShocks® tactical 8"boots, full grain leather upper, ANSI Z41 PT99 I/75 C75, Electrical Hazard approved.	M 7-12, 13, 14, 15 EW 7-12, 13, 14, 15	\$164.09	US
316210	Bates	932	E00932 Men's Bates Lites™ Black Leather	Bates Lites™ Uniform Oxford,oil resistant polyurethane outsole, Goodyear welt construction, removable full cushion dual density polymer footbed, Cambrelle® lining	C 9-12,13 D 6-12,13,14 E 6-12,13,14 EEE 7-12,13	\$115.12	US
316210	Bates	942	E00942 Men's Bates Lites™ High Gloss Black Leather	Bates Lites™uniform oxford, high gloss upper, oil resistant polyurethane outsole, Goodyear welt construction, removable full cushion dual density polymer footbed, Cambrelle® lining.	B 9-12,13,14 C8-12,13,14,15 D 6-12,13,14,15 E 6-12,13,14,15 EEE 6-12,13,14,15	\$102.42	US
316210	Bates	SR78	SR78 Men's Bates Lites™ Black Padded Collar	Bates Lites™ padded collar uniform 3 eyelet chukka boots,oil/slip resistant polyurethane outsole, Goodyear welt construction.	D,E, EEE 6-12,13,14	\$128.72	US
316210	Bates	3640	3640 -Lightweight Combat Hiking Boots - Brown - Mens	Upper: Abrasion Resistant Brown Nubuc Leather; Durable, long-wearing SuperFabric Material;Lining: Waterproof, moisture-wicking 3-layer Cool Grey/Black Omaha Gore-Tex; Outsole: Rubber Vibram 1336 Mutant; slip resistant, oil resistant; multi-directional, oval lugs for grip, stability and traction; contact toe & Heel for grip; aggressive lugs on edge for added stability & traction	7-12,13,14 M, W	\$289.22	US
316210	Belleville	500	USMC Waterproof Combat Boot- Coyote	The USMC certified waterproof 500 boot is built on Belleville's Vanguard® direct injected sole system platform developed to provide combat footwear with superior shock absorption and flexibility. The 500 also features a durably waterproof Gore-tex® bootie and a resolable rubber Vibram® outsole with an aggressive tread pattern that includes multidirectional lugs designed to perform in diverse and rugged terrain; 8" height; Made in USA & Berry Compliant; USMC Certification # 150M22-000541-6-49	R 5-14 W 5-14	\$182.13	US
316210	Belleville	590	USMA Hot Weather Combat Boot - Coyote	The USMC certified waterproof 590 boot is built on Belleville's Vanguard® direct injected sole system platform developed to provide combat footwear with superior shock absorption and flexibility. The 590 also features a resolable rubber Vibram® outsole with an aggressive tread pattern that includes multidirectional lugs designed to perform in diverse and rugged terrain. The 590 is also a lighter weight option to the standard issue boot. ; 8" height; Made in USA & Berry Compliant; USMC Certification # 150M22-000540-6-49	R 5-14 W 5-14	\$141.02	US
316210	Belleville	693	Waterproof Assault Flight Boot - Sage	Full grain cowhide leather & nylon fabric upper, Sage Green; Soft, shock-absorbent polyurethane midsole and exclusive VIBRAM® IBEX low profile outsole designed for improved mobility and maximize traction in rugged terrain; Soft, shock-absorbent polyurethane midsole and exclusive VIBRAM® IBEX low profile outsole designed for improved mobility and maximize traction in rugged terrain; Durably waterproof and highly breathable GORE-TEX® fabric; Sharp angled lugs and defined heel maximize traction; Deeply serrated toe and heel bumper to aid in vertical climbing and crawling; Aggressive lace-to-toe style allows for a customized fit; 8" height; Made in USA & Berry Compliant	R 4-14 W 4-14	\$203.08	US
316210	Belleville	330 COY ST	HOT WEATHER STEEL TOE FLIGHT BOOT COYOTE	HOT WEATHER STEEL TOE FLIGHT BOOT COYOTE	3-16 R & W	\$173.77	US
316210	Belleville	330 DES ST	Belleville Desert 330 USN/USMC Flight Approved	ANSI Class 75 Steel Toe Boots WT-2 Flight Approved Fabric CAMBRELLE® Lining New Improved Chevron Outsole Tread designed to minimize FOD and improve traction CAMBRELLE® Covered Polyurethane Removable Insert	REG 3,4,5,6-12,13,14; Wide 3,4,5,6-12,13,14	\$173.77	US

SIN	MFG Name	MFG. Number	Product Name	Product Description	Sizes Available	GSA Net Price	COO
316210	Belleville	330 ST	Belleville 330 USN/USMC Flight Approved	ANSI Class 75 Steel Toe Boots CAMBRELLE® Lining New Improved Chevron Outsole Tread designed to minimize FOD and improve traction Waterproof Full Grain All-Leather Upper Engineered for Superior Breathability Polyurethane Removable Insert Brown Color	REG 3,4,5,6-12,13,14; Wide 3,4,5,6-12,13,14	\$176.03	US
316210	Belleville	390 DES	Desert 390 USA Approved Non-Steel Toe Co	Durable Leather Which Resists Water Absorption CORDURA® Nylon Fabric Polyurethane Removable Insert Desert Color	NARROW 2-16,REGULAR 2-16; Wide 2-16; EXTRA WIDE 2-16 (1/2 SIZES INCLUDED)	\$120.87	US
316210	Belleville	550ST	550 ST USMC Hot Weather Steel Toe boots	ANSI class 75 Steel toe, Durable Cattlehide leather which resists water absorption, Cordura Nylon Fabric, Polyurethane Removable Insert, Passes ANSI Electrical Hazard leakage test, Puncture resistant sole, Olive green color	REG 3,4,5,6-12,13,14; Wide 3,4,5,6-12,13,14	\$142.03	US
316210	Belleville	600ST	600 USAF Uniform Approved Safety Toe Boots	USAF UNIFORM APPROVED Safety Toe, Sage Green Leather Cordura Nylon Fabric, Vanguard running sole, Lining - None, Cushion Midsole- Polyurethane, Outsole - Rubber- Vibram Sierra, Polyurethane removable insole, Height - 8" (Standard Military Height)	R 6-14, W 6-14	\$128.43	US
316210	Belleville	675 ST	675ST USAF Sage Green 600 gram Thinsulate	VANGUARD® Running Shoe Sole Construction Sage Green All Cowhide Leather 600g THINSULATE™ Insulation Steel Toe - Meets ASTM F2412-05 and F2413-05 Standards GORE-TEX® Fabric Bootie Cushion Midsole - Polyurethane Outsole - VIBRAM® FIRE & ICETM designed to improve traction in icy conditions Polyurethane Removable Insert Height - 8" (Standard Military Height)	R 3-15, W 3-15	\$188.88	US
316210	Belleville	690	690 USAF / USA Approved Sage Green Flight	VANGUARD® Running Shoe Sole Construction Upper Material - Sage Green Leather / Nylon Fabric GORE-TEX® Fabric Bootie Lining - OMAHA Moisture Wicking Lining Cushion Midsole - Polyurethane Outsole - Rubber, VIBRAM® Sierra Polyurethane Removable Insert Height - 8" (Standard Military Height)	N: 3-16 R: 3-16 W: 3-16 EW: 3-16	\$156.39	US
316210	Belleville	700	700 USAF / USA Flight Approved Non-Steel Toe	GORE-TEX® Fabric Bootie; Durably Waterproof, Breathable VIBRAM® Premium Tread Outsole CORDURA® Nylon Fabric Waterproof Full Grain Leather Engineered for Superior Breathability Suryln Box Toe Polyurethane Removable Insert Extensive Foam Padding Under and Around the Foot	Narrow 3.3 1/2 -16; Medium 3.3 1/2-16; Wide 3.3 1/2-16; X Wide 3.3 1/2-16	\$169.99	US
316210	Belleville	790	790 USAF / USA Approved Desert Flight/Co	GORE-TEX® Fabric Bootie; Durable Waterproof, Breathable boots VIBRAM® Premium Tread Outsole CORDURA® Nylon Fabric Suryln Box Toe Extensive Foam Padding Under and Around the Foot Polyurethane Removable Insert Desert (DES) Color	Narrow 3.3 1/2 -16; Medium 3.3 1/2-16; Wide 3.3 1/2-16; X Wide 3.3 1/2-16	\$154.87	US
316210	Belleville	880 ST	880 Insulated All Leather Steel Toe Boot	ANSI Class 75 Steel Toe boots GORE-TEX® Fabric Bootie; Durably Waterproof, Breathable 200g THINSULATE® Insulation US NAVY FLIGHT APPROVED; FLIGHT DECK APPROVED Passes ANSI Electrical Hazard Current Leakage Test Waterproof Full Grain All-Leather Upper Engineered for Superior Breathability Extensive Foam Padding Under and Around the Foot Polyurethane Removable Insert	REG 4-12,13,14; Wide 4-12,13,14	\$179.06	US
316210	Belleville	C300ST	HOT WEATHER STEEL TOE BOOT COYOTE	HOT WEATHER STEEL TOE BOOT COYOTE	4-14 R & W	\$124.65	US
316210	Belleville	C320	ONE XERO Ultra Light 8" Assault Boot - COYOTE	Coyote C320 is one of the lightest Berry Compliant boots in the market. This mission ready boot is built on an athletic strobil-stitch construction and features the exclusive VIBRAM® "Incisor" outsole. Weight approximately 20 ounces per half pair	MEN'S Full Sizes: 4 - 14, R & W; Half Sizes: 4.5 - 13.5, R & W	\$154.87	US
316210	Belleville	C390	C390 COYOTE MENS Hot Weather Combat Boot	C390 COYOTE 8" 100% cattlehide leather & nylon fabric; Highly cushioned, shock absorbent midsole; BERRY COMPLIANT MADE IN USA	MEN'S (C390) Full Sizes: 2 - 16, N, R, W & XW; Half Sizes: 2.5 - 15.5, N, R, W & XW	\$128.43	US
316210	Belleville	C775 ST	600G INSULATED WATERPROOF STEEL TOE BOOT	600G INSULATED WATERPROOF STEEL TOE BOOT	3-14 R & W	\$219.11	US
316210	Belleville	C790	WATERPROOF FLIGHT & COMBAT BOOT	WATERPROOF FLIGHT & COMBAT BOOT	3-16 N, R W & XW	\$157.14	US
316210	Belleville	C790 ST	WATERPROOF STEEL TOE FLIGHT AND COMBAT BOOT COYOTE	WATERPROOF STEEL TOE FLIGHT AND COMBAT BOOT COYOTE	3-16 R & W	\$160.16	US
316210	Belleville	C793	WATER PROOF ASSAULT FLIGHT BOOT COYOTE	WATER PROOF ASSAULT FLIGHT BOOT COYOTE	4-14 R & W	\$190.39	US
316210	Belleville	C795	200G INSULATED COMBAT BOOT COYOTE	200G INSULATED COMBAT BOOT COYOTE	3-16 R & W	\$169.23	US
316210	Belleville	SABRE 533	HOT WEATHER HYBRID ASSAULT BOOT COYOTE	HOT WEATHER HYBRID ASSAULT BOOT COYOTE	4-16 R & W	\$154.87	US
316210	Carolina	115	115 Safety Toe Boots - Mens	12" Engineer boots Black Oiltan Leather Cardinal Outsole Poron® PermaFresh Cushion Insole Engineer Heel MADE IN USA	R 4-14 W 6-13	\$146.12	US

SIN	MFG Name	MFG. Number	Product Name	Product Description	Sizes Available	GSA Net Price	COO
316210	Carolina	1309	1309 Kodiak Mid 6" Safety Toe Boots - Mens	6 Inch Plain Toe Boot with Padded Collar Safety Toe boots Amber Gold Pitstop Leather Moisture Wicking Drilex Lining Poron PermaFresh Cushion Insole Black Millennium Outsole Steel Shank Removable Molded AeroGlide DRYZ Footbed Electrical Hazard Safety Feature MADE IN USA	B 8-12,13,14 D 6-12,13,14,15 2E 6-12,13,14,15,16,17,18 3E 8-12,13,14,15 4E 8-12,13,14,15,16,17,18	\$190.06	US
316210	Carolina	1809	1809 Kodiak Hi 8" Safety Toe Boots - Mens	8 Inch Plain Toe Boot with Padded Collar Safety Toe Amber Gold Pitstop Leather Breathable , Moisture-wicking Drilex Lining Poron PermaFresh Cushion Insole Black Millennium Outsole Steel Shank Removable Molded AeroGlide DRYZ Footbed Electrical Hazard Safety Features MADE IN USA	B 8-12,13,14 D 6-12,13,14,15 2E 6-12,13,14,15,16,17,18 3E 8-12,13,14,15 4E 8-12,13,14,15,16,17,18	\$200.82	US
316210	Carolina	1905	1905 10" Steel Toe Poleclimber Boots - Mens	10" Pole Climber boots Steel Toe Leather Overlay Toe area Heavy Duty steel Shank Black Oil Tan Leather One Piece Vibram sole MADE IN USA	D 7.5-12, 13 EE 8-12, 13	\$194.54	US
316210	Carolina	1922	1922 9" Steel Toe Logger Boots - Mens	Steel Toe Cambrelle Lined Vamp Poron PermaFresh Insole, DRYZ Footbed Vibram Nitrile Rubber, 150+ Rubber, 1 piece Electrical Hazard Boots Made in USA	D 6-12, 13, 14, 15 EE 6-12, 13, 14, 15, 16, 17, 18 EEE 8-12, 13, 14, 15 EEEE 8-12, 13, 14, 15, 16, 17, 18	\$188.27	US
316210	Carolina	309	309 Kodiak Mid 6" Boots - Men's	6 Inch Plain Toe Boot with Padded Collar Amber Gold Pitstop Leather Moisture Wicking Drilex Lining Poron PermaFresh Cushion Insole Black Millennium Outsole Steel Shank Removable Molded AeroGlide DRYZ Footbed Electrical Hazard Safety Feature MADE IN USA, BOOTS	B 8-12,13,14 D 6-12,13,14,15 2E 6-12,13,14,15,16,17,18 3E 8-12,13,14,15 4E 8-12,13,14,15,16,17,18	\$179.30	US
316210	Carolina	505	505 Safety Toe Boots - Mens	8" High Impace Ankle Guard Protection Mocha Pitstop Leather boots Kevlar Outsole and Met Guard Stitching High heat Resistant Alpha 1 Outsole RealSteel Safety Toe ANSI Class M1/75, C/75, MT/75 Padded Ankle Support DRYZ® Pillow Cushion Comfort System RADIATEX® Heat Reflecting Bottom Filler MADE IN USA	D 4-12,13,14 EE 7-12,13,14	\$200.82	US
316210	Carolina	508	508 Safety Toe Boots - Mens	ANSI M 1/75, C/75, MT/75 Rugged Mocha Pitstop Leather Flexible, High Heat Resistant and Chip Resistant Alpha 1 Outsole DRYZ® Pillow Cushion Comfort System Kevlar Heat Resistant Double Outsole and Metguard Stitching RADIATEX® Heat Reflective Bottom Filler Packed with 1 Pair Nylon and 1 Pair Rawhide Laces MADE IN USA	B 9-12,13 D 4-12,13,14 EE 6 1/2-12,13,14 EEE 8-12,13	\$184.68	US
316210	Carolina	809	809 Kodiak Hi 8" Boots - Men's	8 Inch Plain Toe Boot with Padded Collar Amber Gold Pitstop Leather Breathable , Moisture-wicking Drilex Lining Poron PermaFresh Cushion Insole Black Millennium Outsole Steel Shank Removable Molded AeroGlide DRYZ Footbed Electrical Hazard Safety Features MADE IN USA , Boots	B 8-12,13,14 D 6-12,13,14,15 2E 6-12,13,14,15,16,17,18 4E 8-12,13,14,15,16,17,18	\$200.82	US
316210	Carolina	902	902 Engineer Boots - Mens	12" Engineer boots Black Oiltan Leather Cardinal Outsole Poron® PermaFresh Cushion Insole Engineer Heel MADE IN USA	R 4-12,13 W 5-12,13	\$146.12	US

SIN	MFG Name	MFG. Number	Product Name	Product Description	Sizes Available	GSA Net Price	COO
316210	Carolina	905	905 10" Poleclimber Boots - Mens	10" Pole Climber boots Leather Overlay Toe area Heavy Duty steel Shank Black Oil Tan Leather One Piece Vibram sole MADE IN USA	D 6-12, 13, 14 EE 6-12, 13	\$182.89	US
316210	Carolina	922	922 9" Logger Boots - Mens	9" Logger Cambrelle Lined Vamp Poron PermaFresh Insole, DRYZ Footbed Vibram Nitrile Rubber, 150+ Rubber, 1 piece Electrical Hazard Boots Made in USA	D 6-12, 13, 14, 15 EE 6-12, 13, 14, 15, 16, 17, 18 EEE 8-12, 13, 14, 15 EEEE 8-12, 13, 14, 15, 16, 17, 18	\$182.89	US
316210	Chippewa	23913	17" Leather / Cordura Snake	Leather: Expresso Viper Cloth, Toe: Non - Steel, Heel: Defined , Height: 17", Insole: Cushioned, Outsole: Vibram Robinson, Misc. Description: Goodyear Leather Welt, Leather Lining	D(7-12,13,14), E(7-12,13), EEE(8-12,13)	\$251.04	US
316210	Chippewa	25405	9" Waterproof Insulated Super Logger Ste	9 "BAY APACHE WATERPROOF, ASTM F2413-05 STEEL TOE, ELECTRICAL HAZARD, INSULATED SAFETY TOE, Vibram Lug Outsole	E 6-12, 13, 14; EEE 6-12,13,14	\$268.97	US
316210	Chippewa	25408	9" Waterproof Insulated Super Logger	9 "BAY APACHE WATERPROOF, INSULATED, Vibram Lug Outsole	E 6-12, 13, 14; EEE 6-12,13,14	\$264.49	US
316210	Chippewa	25410	9" Waterproof Insulated Super Logger Ste	9 "BAY APACHE WATERPROOF, ASTM F2413-05 STEEL TOE, ELECTRICAL HAZARD, INSULATED SAFETY TOE, Vibram Lug Outsole	E 6-12, 13, 14; EEE 6-12,13,15	\$268.97	US
316210	Chippewa	27909	17" Black Steel Toe Motorcycle	Leather: Odessa Toe: Ansi 75 Steel, Heel: Leather, Height: 17", Insole: Texon Outsole: Vibram Nitrile Yellow Plug Misc. Description: Goodyear Leather Welt, Leather Vamp Lining, Features: Safety Toe	D(6 1/2 - 12,13,14), E(7-12,13) 2E(8 1/2 -12, 13)	\$268.97	US
316210	Chippewa	27950	17" Black Polishable Trooper Boot	Leather: Polishable Toe: Non-Steel, Heel: Leather, Height: 17", Insole: Body Cushion Outsole: Biltrite Alpha Plus Misc. Description: Goodyear Leather Welt, Leather Lining	D(7 1/2-12,13), EE(8 1/2-12)	\$291.39	US
316210	Chippewa	71418	17" Black Steel Toe Motorcycle	Leather: Polishable Toe: Ansi 75 Steel Toe, Heel: Leather, Height: 17", Insole: Texon Outsole:Vibram Nitrile Yellow Plug Misc. Description: Goodyear Leather Welt, Leather Lining Features: Safety Toe	D(6-12,13,14), E(7-12), EE(6-12)	\$268.97	US
316210	Chippewa	L23913	17" Leather / Cordura Snake	Leather: Expresso Viper Cloth, Toe: Non - Steel, Heel: Defined , Height: 17", Insole: Cushioned, Outsole: Vibram Robinson, Misc. Description: Goodyear Leather Welt, Leather Lining	M(5-10)	\$246.55	US
316210	Converse	CM8975	Converse 8" Berry Compliant Tactical Boots - Black - Mens	Berry Compliant:Suede Leather and Cordura:Lining: Moisture Wicking Nylon Mesh; Outsole: RECON Rugged Terrain PU Bottom with Total Cushioning Comfort Bed;100% Non-Metallic, Airport Friendly, Made in the USA	M 6-12, 13, 14; W 6-12,13	\$149.58	PR
316210	Converse	CM8994	Converse 8" Tactical Boots - Desert Tan - Mens	Berry Compliant:Suede Leather and Cordura:Lining: Moisture Wicking Nylon Mesh; Outsole: RECON Rugged Terrain PU Bottom with Total Cushioning Comfort Bed;100% Non-Metallic, Airport Friendly, Made in the USA	M 6-12, 13, 14; W 6-12,13	\$149.58	PR
316210	Converse	CM8999	Converse 8" Tactical Boots - Sage Green - Mens	Berry Compliant:Suede Leather and Cordura:Lining: Moisture Wicking Nylon Mesh; Outsole: RECON Rugged Terrain PU Bottom with Total Cushioning Comfort Bed;100% Non-Metallic, Airport Friendly, Made in the USA	M 6-12, 13, 14; W 6-12,13	\$149.58	PR
316210	Corcoran	1500	10"Original Jump Boot - Black	All Over Comfort & Performance "Spit Shineable" Leather,Original Cap Toe,Garrison Army Munson Last for Superior Fit,Webbing Reinforcement for Ankle Support,Special Ribbed Steel Paratrooper Shank for Support, Extra Firm Heavy Duty Military Counters and Box Toes,High Performance Laces, DRYZ Moisture/Odor Control Shock Absorbing Cushioned Insole,Reinforced Military Tap Oil Resistant Rubber Sole, Non-Trip Beveled Heel, Oil Resistant	Men's: A 6-12,13,14,15,16 B 6-14,15,16 C 6-14,15,16 D 6-14,15,16 E 6-14, 15,16 EE 6-14, 15,16 EEE 6-14, 15,16	\$136.88	US
316210	Corcoran	1510	10" Historic Military Brown Jump Boot -	Original Cap Toe,Garrison Army Munson Last for Superior Fit,All Over Comfort & Performance "Spit Shineable" Leather,Webbing Reinforcement for Ankle Support,Special Ribbed Steel Paratrooper Shank for Support,Extra Firm Heavy Duty Military Counters and Box Toes,Leather Laces, PORON® Insole,Reinforced Military Tap, Oil Resistant Rubber and Leather Sole,Non- Trip Beveled Heel, Oil Resistant	Men's: D 7-12,13 EE 7-12, 13	\$137.79	US
316210	Corcoran	1515	10 Inch Original Jump Boot - Black	All Over Comfort & Performance "Spit Shineable" Leather,Original Cap Toe,Garrison Army Munson Last for Superior Fit,Webbing Reinforcement for Ankle Support,Special Ribbed Steel Paratrooper Shank for Support, Extra Firm Heavy Duty Military Counters and Box Toes,High Performance Laces, DRYZ Moisture/Odor Control Shock Absorbing Cushioned Insole,Reinforced Military Tap Oil Resistant Rubber Sole, Non-Trip Beveled Heel, Oil Resistant	Womens: N 6-10, M 4-10,11 W 5.5-10,11	\$136.88	US
316210	Corcoran	1525	10 Inch Field Boot - Black	Comfort & Performance Leathers,Original Cap Toe,Garrison Army Munson Last for Superior Fit,Combination of Leather Toe Cap and Counter - "Spit Shineable",Webbing Reinforcement for Ankle Support,Special Ribbed Steel Paratrooper Shank for Support,Extra Firm Heavy Duty Military Counters and Box Toes,Speed Lacing,High Performance Laces,DRYZ® Moisture/Odor Control Shock Absorbing Cushioned Insole,Vibram® Self Cleaning 4-Way Traction Outsole	Men's: A 6-12,13,14,15 B 6-13,14,15 C 6-14,15 D 6-14,15 E 6-14,15 EE 6- 14,15 EEE 6-14, 15	\$152.30	US
316210	Corcoran	17146	10" Leather Cordura Marauder - Black	Original Cap Toe,Garrison Army Munson Last for Superior Fit,CORDURA® High Performance Fabric,Cambrelle® Breathable Moisture Wicking Lining,Combination of Leather Toe Cap and Counter - "Spit Shineable",Webbing Reinforcement for Ankle Support,Flexible Stainless Steel Plate built into Outsole for Puncture Resistance,Special Ribbed Steel Paratrooper Shank for Support,Extra Firm Heavy Duty Military Counters and Box Toes,Speed Lacing,High Performance Laces,DRYZ® Moisture/Odor Control Shock Absorbing Cushioned Insole,Exclusive Falcon Polyurethane Comfort System, Oil Resistant, Non-Marking Outsole	Men's: D 6-12,13,14,15,16 EE 6-12, 13,14,15,16	\$141.42	US

SIN	MFG Name	MFG. Number	Product Name	Product Description	Sizes Available	GSA Net Price	COO
316210	Corcoran	4330	4330 10 in. Desert Tan Fleshout Leather	Goodyear Patented Flex-Well™ Construction Top Quality Desert Tan Fleshout Leather Toe Cap and Counter Garrison Army Munson Last for Superior Fit Cordura® High Performance Fabric Vamp and Quarters Cambrelle® Breathable Moisture Wicking Lining Webbing Reinforcement for Ankle Support Fiberglass Shank Full Height Speed Lace System All New DRYZ® Moisture/Odor Control Shock Absorbing Cushioned Insert High Tech Carbon Heat Absorbing Bottom Fill Patented Shock Absorbing Polyurethane Midsole Vibram® Sierra Self Cleaning 4-Way Traction Outsole	Mens D 7-12,13,14 EE 7-12,13,14	\$192.20	US
316210	Corcoran	4390	4390 9 " Fleshout Leather/Cordura® Non-I	Top Quality Desert Tan Fleshout Leather Goodyear Patented Flex-Well™ Construction 1000 Denier Cordura® Nylon Performance Fabric Cambrelle® Breathable Moisture Wicking Lining Speed Lace System Fiberglass Shank Removable DRYZ® Moisture/Odor Control Shock Absorbing Cushioned Insert DRYZ® Memory Foam High Tech Carbon Heat Absorbing Bottom Fill Patented Shock Absorbing Polyurethane Midsole Vibram® Sierra Outsole	Mens N 6-13, 14 M 6-13, 14, 15, 16 W -13, 14, 15, 16 XW 6-13, 14	\$151.39	US
316210	Corcoran	4407	4407 10" Desert Tan Fleshout Leather Tan	Top Quality Desert Tan Fleshout Leather Goodyear Patented Flex-Well™ Construction Garrison Army Munson Last for Superior Fit Extra Wide Double Strap Close with Heavy Duty No-Rust Steel Roller Buckles Webbing Reinforcement for Ankle Support Heavy Duty Storm Welt Steel Paratrooper Shank DRYZ® Memory Foam Exclusive Oil-Resistant Polyurethane Cushioned Non-Marking Flexible Falcon Outsole	Mens D 6-12, 13, 14 EE 6-12, 13, 14	\$181.31	US
316210	Corcoran	4525	4525 10-in Desert Tan Fleshout Leather F	Goodyear Patented Flex-Well™ Construction Top Quality Desert Tan Fleshout Leather Garrison Army Munson Last for Superior Fit Webbing Reinforcement for Ankle Support Special Ribbed Steel Paratrooper Shank for Support Extra Firm Heavy Duty Military Counters and Box Toes Full Height Speed Lace System All New DRYZ® Moisture/Odor Control Shock Absorbing Cushioned Insert Patented PGD Shock Absorbing Polyurethane Midsole Vibram® Sierra Self Cleaning 4-Way Traction Outsole	Mens D 7-12, 13, 14 E 7-12, 13, 14	\$197.64	US
316210	Corcoran	8700	8700 Air Force Sage Boots - Mens	Sage Green Fleshout Leather. 1000 Denier Cordura® Nylon. Speed Lace System. Exclusive Dryz® Powered by X-Static® Insert. Fiberglass Shank. Patented Shock-Absorbing Midsole. Goodyear Patented Flex-Well(TM) Construction. Vibram® Sierra Outsole.	Mens D 6-12, 13, 14, 15, 16 EE 6-12, 13, 14, 15, 16 EEE 6-12, 13, 14, 15, 16	\$158.64	US
316210	Corcoran	87146	87146 Air Force Sage Boots - Mens	Sage Green Fleshout Leather. 1000 Denier Cordura® Nylon. Garrison Army Munson Last for Superior Fit. Webbing Reinforcement for Ankle Support. Extra-Firm Heavy-Duty Military Counters and Box Toes. Speed Lace System. Exclusive Dryz® Powered by X-Static® Insert. Fiberglass Shank. Exclusive Falcon Comfort System. Oil-Resistant, Non-Marking Outsole.	Mens D 6-12, 13, 14, 15, 16 EE 6-12, 13, 14, 15, 16	\$168.62	US
316210	Corcoran	87546FR	10" Sage Green USAF Steel Toe marauder	Sage Green Rough Out Leather, USAF Sage Green 1000 Denier Fire Resistant Cordura, Moisture Wicking Lining, Speed Lace System, External Ankle Support, Removable Dryz® with X-Static® Polyurethane Insert, Broad Anatomically Correct Safety Toe, Steel Safety Toe: Meets ASTM F2413 Standard for Protective Footwear, Non-Metallic Shank, Storm Welt Construction, Polyurethane Midsole, Vibram® OMNI-TRAC 1321 Fire and Slip Resisting Outsole, Berry Amendment Compliant, Union Made in the U.S.A.	Mens D, EE 6-12,13,14	\$217.49	US
316210	Corcoran	978	10 Inch Plain Toe Combat Boot with Lug O	Comfort & Performance Leather- "Spit Shineable" Leather,Garrison Munson Last for Superior Fit,Steel Shank, Heavy Duty Storm Welt,PORON® Permafresh® Cushioned Insole,One Piece Rubber Lug Outsole	Men's: D 7-12,13,14 EE 7-12,13,14	\$135.97	US
316210	Corcoran	985	10 inch Side Zipper Field Boot - Black	All Over Comfort & Performance - "Spit Shineable" Leather,Garrison Army Munson Last for Superior Fit,Goodyear Welt Construction,Webbing Reinforcement for Ankle Support,Heavy Duty Storm Welt,Steel Paratrooper Shank,PORON® Shock Absorbing Insole,Exclusive High Abrasion Lug Outsole,Stay-Put Zipper and Zipper Flap Guard	Men's: M 6-12,13,14 W 7-12,13,14	\$149.58	US
316210	Corcoran	XC1500	10" Jump Boot with Light Weight Outsole	Original Cap Toe, Garrison Army Munson Last for Superior Fit, All over comfort & Performance "Spit Shineable" Leather, Webbing Reinforcement for Ankle Support, Special Ribbed Steel Paratrooper Shank for Support, Extra Firm Heavy Duty Military Counters and Box Toes, High Performance Laces, DRYZ® Moisture/Odor Control Shock Absorbing Cushioned Insole, Exclusive Polyurethane Single Density Comfort Jump Sole Unit, Oil Resistant Non-Marking Outsole, Non-Trip Beveled Heel	Men's: D 7-12,13,14 EE 7-12, 13,14	\$130.53	US
316210	Corcoran	XC1585	10" Side Zipper Jump Boot - Black	Original Cap Toe,Garrison Army Munson Last for Superior Fit,All Over Comfort & Performance "Spit Shineable" Leather,Extra Firm Heavy Duty Military Counters and Box Toes,High Performance Laces,DRYZ® Moisture/Odor Control Shock Absorbing Cushioned Insole,Exclusive Polyurethane Single Density Comfort Jump Sole Unit, Oil Resistant Non-Marking Outsole,Non-Trip Beveled Heel,Stay-Put Heavy Duty YKK Zipper	Men's: D 7-12,13,14 EE 7-12, 13,14	\$139.60	US

SIN	MFG Name	MFG. Number	Product Name	Product Description	Sizes Available	GSA Net Price	COO
316210	Corcoran	XCS2525	10" Steel Toe Field Boot - Black	Comfort & Performance Leather, Original Cap Toe, Combination of Leather Toe Cap and Counter - "Spit Shineable", Webbing Reinforcement for Ankle Support, Special Ribbed Steel Paratrooper Shank for Support, Extra Firm Heavy Duty Military Counters and Box Toes, Speed Lacing, High Performance Laces, DRYZ® Moisture/Odor Control Shock Absorbing Cushioned Insole, Vibram® Sierra Traction Outsole, Steel Safety Toe: Meets all current ANSI Standards, Class 75	Men's: D 7-12, 13, 14 EE 7-12, 13, 14	\$161.37	US
316210	Cosmas	CMF14	Cosmas Titan Firefighter Boots - Black - Mens	The Cosmas Titan is a 14" high, pull-on bunker style boots that meets or exceeds NFPA 1971: UPPER - Full-grain, water, flame, chemical, and cut resistant leather, 2.4 - 2.6 mm nominal thickness, 6.5 oz. Mesh window for enhanced ventilation. SAFETY TOE - Corrosion resistant, anatomically shaped steel safety toe exceeds all relevant standards for protection. High traction, abrasion resistant, electrically insulating, oil, flame, and chemical resistant, nitrile rubber outsole	US D 5-13, 14, 15; E 5-13, 14, 15; EEE 5-13, 14, 15	\$323.68	RO
316210	Cosmas	CMF19	Hercules V2 Firefighter Boots - Black - Mens	Cosmas Hercules V2 9" high, leather lace-up mountaineering-style boots that meets or exceeds NFPA 1977, Standard on Protective Clothing and Equipment for Wildland Fire Fighting, One piece, full-grain, water, flame, chemical, and cut resistant leather construction, 2.4 - 2.6 mm nominal thickness, 6.5 oz. High traction, abrasion resistant, oil, flame, and chemical resistant, nitrile rubber outsole.	US D 5-13, 14, 15; E 5-13, 14, 15; EEE 5-13, 14, 15	\$323.68	RO
316210	Cosmas	CMF24	Cosmas Vulcan Firefighter Boots - Black - Mens;	14" high, pull-on bunker style boot; VAMP - Full-grain, water, flame, chemical, and cut resistant leather, 2.4 - 2.6 mm nominal thickness, 6.5 oz., Corrosion resistant, anatomically shaped steel safety toe; Five-layer laminate of durable Cambrelle quilted to a 300 g polyester felt thermal barrier, laminated to a CROSSTECH moisture barrier.	US D 5-13, 14, 15; E 5-13, 14, 15; EEE 5-13, 14, 15	\$343.63	RO
316210	Hoffman	16DL	Hoffman Boots 16" Dri-Line Boots - Mens	The 16" Hoffman Dri-Line was built to keep your feet dry inside when conditions are wet on the outside. A taller top allows for increased leg protection and support. A waterproof Sympatec bootie makes this boot an excellent choice for those working in wet, sloppy conditions. For climbing, the dual steel shanks are added to provide the extra arch support needed. Other quality features include a 7-7 1/2 oz all tanned leather upper that provides support to your legs. A climber side patch, solid brass hooks and eyelets, supportive heel counter, Vibram lug sole and three rows of durable stitching help prolong the life of the boot.	D 7-12, 13 EE 7-12, 13	\$340.01	US
316210	Hoffman	COY Power	10" Coyote Powerline	10" Powerline boot in Coyote color is made especially for the US military service. Dual steel shanks, waterproof lining and a Vibram sole with a defined heel. Made in the USA. The Powerline tends to run 1/2 large, so you may want to order 1/2 smaller than your normal boot size.	D 7-14, EE7-14	\$321.87	US
316210	Hoffman	L2210ST	Hoffman 10" Steel Toe Pole Climber	10" Black Hoffman Pole Climber Linesman Boots with ASTM Steel Safety Toe, EH Rated F2413-11, Dual Steel Shanks, Linesman Climbing Patch, Vibram Lug Sole	D 7-12, 13, 14; E 8-12, 13; EE 8-12, 13	\$321.87	US
316210	Hoffman	L2212ST	Hoffman 12" Steel Toe Pole Climber	12" Black Hoffman Pole Climber Linesman Boots with ASTM Steel Safety Toe, EH Rated F2413-11, Dual Steel Shanks, Linesman Climbing Patch, Vibram Lug Sole	D 7-12, 13, 14; E 7-12, 13	\$330.94	US
316210	Hoffman	L2216ST	Hoffman 16" Steel Toe Pole Climber	16" Black Hoffman Pole Climber Linesman Boots with ASTM Steel Safety Toe, EH Rated F2413-11, Dual Steel Shanks, Linesman Climbing Patch, Vibram Lug Sole	D 8-12, 13, 14; E 8-12, 13	\$340.01	US
316210	Hoffman	POWER	Hoffman Boots 10" Powerline Boots - Mens	The Hoffman Boots 10" Powerline boot is for linemen who work in warmer temperatures or for those of you who want a lightweight climbing boot with all the bells and whistles. The steel toe Hoffman Powerline offers many features found on other Hoffman line boots. A double midsole combined with our DUAL STEEL SHANKS provide plenty of climbing support. A rebuildable vibram lug sole provides excellent wear and a added climbing heel adds climbing safety. A waterproof liner will help keep you dry no matter what the weather is doing. The leather/cordura upper provides breathability to help keep you cool. A foot orthotic is included with every pair. The Powerline tends to run 1/2 large, so you may want to order 1/2 smaller than your normal boot size.	D 7-12, 13 EE 7-12, 13	\$330.57	US
316210	Hoffman	ST POWER	Hoffman Boots 10" Powerline Steel Toe Boots - Mens	The Hoffman Boots 10" STEEL TOE Powerline boot is for those who want a lightweight climbing boot with all the bells and whistles. The steel toe Hoffman Powerline offers many features found on other Hoffman line boots. A double midsole combined with our DUAL STEEL SHANKS provide plenty of climbing support. A rebuildable vibram lug sole provides excellent wear and a added climbing heel adds climbing safety. A waterproof liner will help keep you dry no matter what the weather is doing. The leather/cordura upper provides breathability to help keep you cool. A foot orthotic is included with every pair. The Powerline tends to run 1/2 large, so you may want to order 1/2 smaller than your normal boot size.	D 7-12, 13, 14 EE 8-12, 13	\$335.10	US
316210	La Sportiva	835	Baruntse - High Altitude Mountaineering boot	IDEAL TERRAIN: 6000-7000 meter peaks or high cold mountaineering conditions; WEIGHT: 44.7 oz / 1267 g; Transparent PU Tech anti-abrasion film with high insulation expanded PE / High density expanded PE insulating netting / Synthetic micro-fiber / High abrasion resistant Cordura® / Giugiaro lacing hardware; INNER BOOT: Anti-abrasion Cordura® / Thermo-moldable 7mm high density insulating EVA; NSOLE: 6 mm insulating Ibi-Thermo + PE insulating barrier and aluminum insulation; MIDSOLE: 8-9 mm TPU/SBR Air Cushion	37-48, 49, 50 (includes 1/2 sizes)	\$538.04	IT
316210	La Sportiva	10E	Futura	Climbing Shoe - Mens No Lace / Velcro Closure No Edge technology Blue Size 32-36 Single shoe weighs 8 Oz / 225 Gm	32 - 36	\$161.37	IT
316210	La Sportiva	10R	Genius	Climbing Shoe - Mens lace up with No Edge technology Red Yellow Size 32-36 Single shoe weighs 7.76 Oz / 220 Gm	32 - 36	\$170.33	IT
316210	La Sportiva	11C	Glacier WLF - Wild Land Firefighting boot / Backpacking boot	IDEAL TERRAIN: wildland firefighting, linesman, backpacking; WEIGHT: 32.1 oz • 910 g; UPPER: 3mm Idro-Perwanger Roughout Leather; LINING: Dry-Best®; SOLE: Vibram® Ice-New HRO Test and ISO 20344 Certified	37-48 (half sizes)	\$260.05	IT

SIN	MFG Name	MFG. Number	Product Name	Product Description	Sizes Available	GSA Net Price	COO
316210	La Sportiva	11J	Trango Cube GTX	Alpine Climbing Boot Mens - Lightweight, Insulated, Waterproof w GoreTex Membrane. For all Alpine conditions Blue / Red Sizes 37-48 Single Boot weighs 25.Oz / 710 Gms	37-48	\$336.23	IT
316210	La Sportiva	11L	Nepal Cube GTX	Mountaineering Boots Mens - Lightweight, Warm, Goretex Waterproof Membrane Single Boot weight 31.5 Oz / 894 Gms	24 - 48 (half sizes)	\$515.57	IT
316210	La Sportiva	11N	Trango Alp EVO GTX	Alpine Climbing boots Mens Seamless Waterproof Light Weight Size 37-48 Grey and Yellow Single Boot 27.86, Oz. / 790 Gm	37-48	\$336.23	IT
316210	La Sportiva	11P	Trango Ice Cube GTX	Alpine Climbing Boot Mens - Lightweight, Insulated, Waterproof for all Alpine conditions Sizes 37-48 Black Yellow Single Boot 25.64 Oz / 727 Gm	37-48	\$493.15	IT
316210	La Sportiva	11Q	G2 SM	Mountaineering Boots Mens - Lightweight, Insulated, Extra Warm Double boot Black Yellow	37-48	\$739.75	IT
316210	La Sportiva	11Q-OS	G2 SM- Oversize	Mountaineering Boots Mens - Lightweight, Extra Warm Double boot - Black Yellow Sizes 49 and 50	49 & 50	\$784.63	IT
316210	La Sportiva	12D	Pamir -Mens Backpacking Boots	IDEAL TERRAIN: heavy duty backpacking and hiking in technical terrain; WEIGHT: 31.0 oz/882 g; UPPER: 2.8mm greased Idro-Perwanger leather; LINING: Leather	38 - 48 (half sizes)	\$237.63	IT
316210	La Sportiva	12G	Delta GTX- Backpacking- Fastpacking boot	IDEAL TERRAIN: lightweight backpacking fastpacking; WEIGHT: 28 oz • 781 g; UPPER: 1.8mm Roughout Leather/ Loric@/ Cordura@ w/Lycra; LINING: Gore-Tex®	38-48 (half sizes)	\$224.18	IT
316210	La Sportiva	12J	Pamir- Womens Backpacking Boot	IDEAL TERRAIN: heavy duty backpacking and hiking in technical terrain; WEIGHT: 24.8 oz/882 g; UPPER: 2.8mm greased Idro-Perwanger leather; LINING: Leather	36 - 48 (half sizes)	\$237.63	IT
316210	La Sportiva	199	Solution -Climbing Shoe	» See a 360 View... \$OLUTION A high performance shoe purposely built to provide the solution for modern bouldering problems Wrapped in sticky Vibram® XS Grip rubber and drastically down-turned, the Solution sports a molded 3D heel cup and the patented P3® power platform which retains the downturned shape of the shoe. This creates a shoe that hooks, grabs, edges and smears on any feature you can find. The Lock Harness System® surrounds your foot and weds it to the upper for a perfect fit. The highly adjustable Fast Lacing System® lets you tailor the quick closing hook and loop closure for a highly personalized fit. All said and done, this shoe will let you climb harder. WEIGHT: 8.89 oz • 258 g LAST: PD 80 CONSTRUCTION: Slip Lasted	33 - 46 (half sizes)	\$138.99	US
316210	La Sportiva	226	Katana Climbing Shoe	A performance hook and loop closure shoe for every type of climbing Lined with Pacific in the forefoot for toe knuckle comfort and Dentex in the back for moisture management, the Katana sports a Loric@ toe-box to help keep the shape of the toe box and provide power while edging. The slingshot rand is connected to the powerhinge for excellent edging prowess and the opposing hook and loop closure straps provide opposing tension for a great fit. WEIGHT: 7.87 oz • 223 g LAST: PD 55 CONSTRUCTION: Slip Lasted FIT: Tech w/ Medium-High Asymmetry UPPER: Loric@/ Leather LINING: Pacific (forefoot)/ Dentex (back) MIDSOLE: 1.1mm full-length LaspoFlex SOLE: 4mm Vibram® XS Grip	33 - 46 (half sizes)	\$121.06	IT
316210	La Sportiva	230	Mythos Climbing Shoe -Terra	A high performance shoe that does everything and fits everyone The patented Mythos lacing system lets you get the perfect fit for whatever type of foot you have. The soft unlined leather upper adapts to whatever shape your foot is and it is great for all day multi-pitch routes where your feet tend to swell. The Vibram® rubber rand is perforated to allow for stretch and comfort. This is the perfect shoe for crack climbing with its low profile toes-flat-fit and the overall neutral round shape of the shoe. WEIGHT: 8.74 oz • 248 g LAST: RN 25 CONSTRUCTION: Slip Lasted FIT: Tech w/ Medium-Low Asymmetry UPPER: Leather LINING: Unlined (Dry-Best® in tongue only) MIDSOLE: 1.1mm full-length LaspoFlex SOLE: 4mm Vibram® XS Grip	33 - 48 (half sizes)	\$116.57	IT
316210	La Sportiva	238	MAKALU MENS	Mens General purpose Mountaineering boot, Alpine ice and heavy weight backpacking. Similar to Glacier with a stiffer midsole and automatic crampon compatibility (grooves in both toe and heel of outsole) Half sizes 36-48 Natural Weight 4 lbs 5 oz	36-48	\$242.12	IT
316210	La Sportiva	241	MAKALU WMNS	Womens General purpose Mountaineering boots, Alpine ice and heavy weight backpacking. Similar to Glacier with a stiffer midsole and automatic crampon compatibility (grooves in both toe and heel of outsole) Half sizes 36-43 Natural Weight 4 lbs 5 oz	36-43	\$242.12	IT
316210	La Sportiva	255	Tetarossa-Climbing Shoe	A high performance shoe for steep sport routes and difficult bouldering Sick down-turned edging power is what you get in this high performance brilliantly designed work of art. We strategically placed Loric@ (does not stretch) and leather (does stretch) in specific patterns to design the most powerful edging machine on the market. We call it bi-lateral stretch technology. A 3D cupped hytrel midsole under the toes ties into a high tension figure-eight rand that allows you to grab features with your feet and go for the chains. WEIGHT: 7.44 oz • 211 g LAST: PD 85 CONSTRUCTION: Slip Lasted FIT: Performance w/ High Asymmetry UPPER: Leather/ Loric@ LINING: Pacific in the toe and heel/ Dry-Best® in tongue INSOLE: 3D Hytrel Anatomical Insert (under toes) MIDSOLE: 3D Hytrel Anatomical Insert (under toes) SOLE: 4mm Vibram® XS Grip	33 - 45 (half sizes)	\$143.48	IT

SIN	MFG Name	MFG. Number	Product Name	Product Description	Sizes Available	GSA Net Price	COO
316210	La Sportiva	274	Trango S Evo GTX Mountaineering Boots	COLOR: Red UPPER: Waterproof Cordura® with idro-treatment/FlexTec2/Water-repellant Lorica® with Antiacqua™ external coating/Vibram® XSV Rand CONSTRUCTION: Board Lasted LAST: Trango LINING: Gore-Tex® SOLE: Vibram® Mulaz (sticky Supertrek rubber) MIDSOLE: Micropore (forefoot)/PU (heel)/TPU crampon reinforcement in back INSOLE: 7mm TrangoFlex with integral nylon shank WEIGHT: 26.17 oz/742 gm	36-48	\$260.05	US
316210	La Sportiva	280	Nepal Evo Mountaineering Boots	COLOR: Yellow UPPER: 3.2mm+ Idro-Perwanger Roughout Leather with high-abrasion resistant fabric/Vibram® XSV Rands CONSTRUCTION: Board Lasted LAST: Nepal LINING: Gore-Tex® Duratherm® SOLE: Vibram® IBS MIDSOLE: 8-9mm HP3/PU inserts/SBR Aircushion INSOLE: Insulating Ibi-thermo 9mm WEIGHT: 35.7 oz/1012 gm	37-48	\$425.94	US
316210	La Sportiva	281	Nepal Evo Womens Mountaineering Boots	COLOR: Yellow UPPER: 3.2mm+ Idro-Perwanger Roughout Leather with high-abrasion resistant fabric/Vibram® XSV Rands CONSTRUCTION: Board Lasted LAST: Nepal LINING: Gore-Tex® Duratherm® SOLE: Vibram® IBS MIDSOLE: 8-9mm HP3/PU inserts/SBR Aircushion INSOLE: Insulating Ibi-thermo 9mm WEIGHT: 35.7 oz/1012 gm	36-42	\$425.94	US
316210	La Sportiva	282	GLACIER EVO MENS	Mens Mountaineering boots, difficult hiking on rugged terrain, snowfields and glacier travel. New snow collar with RSS allows maximum ankle flexibility and stability combination. Drilex lined. Half Sizes 36-48. Gray. Weight 4 lbs. 2 oz	36-48	\$237.63	IT
316210	La Sportiva	283	GLACIER EVO WMNS	Womens Mountaineering boots, difficult hiking on rugged terrain, snowfields and glacier travel. New snow collar with RSS allows maximum ankle flexibility and stability combination. Drilex lined. Half Sizes 36-43. Ice Blue. Weight 4 lbs. 2 oz	36-43	\$237.63	IT
316210	La Sportiva	284	Trango S Evo GTX Mountaineering Boots Wo	COLOR: Light Blue UPPER: Waterproof Cordura® with idro-treatment/FlexTec2/Water-repellant Lorica® with Antiacqua™ external coating/Vibram® XSV Rand CONSTRUCTION: Board Lasted LAST: Women's Trango LINING: Gore-Tex® SOLE: Vibram® Mulaz (sticky Supertrek rubber) MIDSOLE: Micropore (forefoot)/PU (heel)/TPU crampon reinforcement in back INSOLE: 7mm TrangoFlex with integral nylon shank WEIGHT: 21.98 oz/623 g	36-43	\$260.05	US
316210	La Sportiva	290	Olympus Mons Evo Mountaineering Boots	COLOR: Yellow/Black GAITER: Breathable Cordura® (upper part)/Kevlar anti-perforation fabric (lower part)/Riri Storm® zipper (UV resistant and waterproof) OUTER BOOT: Cordura® upper lined with dual density PE micro-cellular thermal insulating closed cell foam and a thermo-reflective aluminum facing/Insulated removable footbed/Vibram® XSV Rand INNER BOOT: Water repellent breathable upper with polyamide external layer/Dual density PE thermal insulating micro-perforated ventilated foam/Tri-dimensional structured polyester lining combined with pile CONSTRUCTION: Inner: Slip lasted Outer: Board Lasted LAST: Olympus Mons SOLE: Insulating Vibram® PE with rubber inserts MIDSOLE: HP3 INSOLE: 5mm Carbon Fiber + 2.5mm PE micro-cellular thermal insulating closed cell foam topped with a thermo-reflective aluminum layer reinforced with perforated hydrophobic non-woven facing WEIGHT: 39.86 oz/1130 gm	39-47	\$807.05	US
316210	La Sportiva	296	Spantik Mountaineering Boots	COLOR: yellow/gray/black OUTER BOOT: PU-Tech transparent PU-coated embossed Benecke CeraCom® Pur leatherette/Water-repellant Lorica® with Antiacqua® external coating/Vibram® XSV Rand/Molded TPU ankle and backstay reinforcement/PE micro-cellular thermal insulating closed cell foam lined with a thermo-reflective aluminum facing coated with an anti-abrasion flocking. INNER BOOT: Micro-perforated thermo-formable PE/Water-repellant Lorica® with Antiacqua® external coating CONSTRUCTION: Outer: Board Lasted Inner: Slip Lasted LAST: Nuptse SOLE: Vibram® Montagna MIDSOLE: HP3/Dual-density micropore EVA INSOLE: 5mm Carbon Fiber with thermal, structure and central insert in polyester and aluminum insulation WEIGHT: 44.48 oz/1261 gm	38-47	\$627.71	US
316210	La Sportiva	336	Trango Extreme EVO Light Mountaineering	COLOR: Guaranteed Summit Silver UPPER: Water-repellant Cordura® with idro-treatment/Flex Tec 2/Water-repellant Lorica® with Antiacqua external coating/Double Vibram® rubber rands CONSTRUCTION: Board Lasted LAST: Trango LINING: Gore-Tex® Duratherm® SOLE: Vibram® Lavaredo (Sticky Supertrek Rubber) MIDSOLE: 6-7 mm HP3 INSOLE: 9mm Insulating Ibi-Thermo WEIGHT: 30.51 oz/865 gm	37-47.5	\$358.69	US
316210	La Sportiva	395	Batura Mountaineering Boots	COLOR: Yellow/Black UPPER: High tenacity nylon/ Insulated Anti-dragging Felt/ Insulated PE/ Insulating Aluminum Layer CONSTRUCTION: Board Lasted LAST: Nepal LINING: Polyamide Thermic layer/Mesh SOLE: Vibram® with Impact Brake System™ MIDSOLE: 8-9mm TPU/PU inserts/ SBR Aircushion INSOLE: Insulating Ibi-Thermo 9mm WEIGHT: 34.67 oz/983 gm	37-48	\$533.55	US
316210	La Sportiva	559	Trango Alp Mountaineering Boots	COLOR: Silver/Grey UPPER: 2.2mm Idro-Perwanger Roughout Leather/ Water-repellant Lorica® with Antiacqua™ external coating/ Vibram® rubber rand CONSTRUCTION: Board Lasted LAST: Trango LINING: Gore-Tex® SOLE: Vibram® Salsalong with Impact Brake System™ MIDSOLE: Micropore (forefoot)/ PU (heel)/ TPU crampon reinforcement in the back INSOLE: mm Trangoflex with integral nylon shank WEIGHT: 26.46 oz/750 gm	SIZES: 36 - 48	\$269.02	US
316210	La Sportiva	600A	Trango Prime -Mountaineering Boot	IDEAL TERRAIN: technical mixed climbing, ice climbing; WEIGHT: 29.7 oz • 842 g; UPPER: Waterproof Cordura® with Idro-treatment/ Flex Tec 2/ Water-repellant Lorica® with Antiacqua™ / Vibram® rubber rand; LINING: Primaloft®/ Waterproof barrier	37 - 47.5 (half sizes)	\$349.72	US

SIN	MFG Name	MFG. Number	Product Name	Product Description	Sizes Available	GSA Net Price	COO
316210	La Sportiva	856	Karokorum	Leather mountaineering and backpacking boot perfect for NOLS and Outward Bound courses. A boot designed for classical mountaineering, heavyweight trekking or working outdoors thanks to its sturdy and hardwearing properties. The boot features a wide, comfortable toe area; uppers made from Idro-Perwanger leather incorporating the 3D flex system hinge to allow natural ankle movement without losing stability; and a sturdy, durable, semi-automatic crampon compatible Vibram® sole. CONSTRUCTION: Board Lasted LINING: Dry-Best UPPER: 2.8mm Idro-Perwanger Roughout Leather/ Vibram® rubber rand/ Cordura® cuff MIDSOLE: SBR Aircushion SOLE: Vibram® Couloir with semi-automatic crampon attachment for alpine climbing LAST: Makalu WEIGHT: 32.73 oz / 928 g	38-47	\$242.12	IT
316210	La Sportiva	861	TC Pro - Climbing Shoe	The ultimate technical big wall free climbing shoe developed in collaboration with Tommy Caldwell Designed to provide powerful, technical edging AND crack climbing prowess without compromising either. This game changing, mid-height edging machine will take you out of a technical thin hands to rattley fingers crack and out on to the diciest dime edges you can find. Thin padding in the ankle and above the toes protects you in the cracks and the patented P3® platform delivers sensitive yet powerful edging abilities. The toes flat fit is perfect for comfortable crack climbing and the ventilated tongue and lateral rand perforations promote air-flow. We worked with Vibram® on a new rubber compound that works best for technical edging and developed the XS Edge compound which holds an edge better on sharp micro edges. WEIGHT: 8.71 oz • 247 g LAST: PD 55 FIT: Tech w/ Medium-High Asymmetry UPPER: Leather/ Vibram® rubber rands LINING: Unlined (underfoot)/ Sentex/ PU foam/ Aimesh (tongue) MID	33 - 46 (half sizes)	\$152.44	IT
316210	La Sportiva	88 G	SYBORG SKI BOOT	LA SPORTIVA MENS The Syborg is an affordable everyday training boot for serious racers, a race day boot for amateurs, & a state-of-the-art ultra lightweight backcountry boot for fast & light advantages that ski mountaineering race boots offer. The Syborg adopts a race-proven single-throw buckle system utilizes the patented CavoBike lever mechanism to transition effortlessly from walk to ski modes.	23.5 - 30	\$671.65	IT
316210	La Sportiva	88E	Spectre Alpine Touring	The lightest 4-buckle Alpine Touring boot on the market, the Spectre achieves the greatest range of cuff rotation in its class. The patented design allows a full 60 degrees of ankle movement and the Vertebra construction adds support for downhill performance. The exclusive, low-profile Pegasus buckle system allows macro and micro adjustability for a precise fit. The EZ Flex tongue is designed to work seamlessly with the EZ Flex Liner so that inner and outer boots mesh cleanly while walking or skinning. Color: Black and Yellow 6 lbs 5.9 oz (2,890 grams) per pair (size 27.5) - Ultra-lightweight Real 60° cuff range of motion - walks like a hiking boot EZ Flex tongue for smooth effortless touring and walking Custom EZ Thermo Liners - plush and thermo-formable Pegasus buckles are micro-adjustable without undoing the buckle	Sizes: 39-48	\$581.97	US
316210	La Sportiva	88H	SPITFIRE 2.0	LASPORTIVAA lightweight, high-performance crossover from touring & racing. Compatible w/Trab TR2, tech bindings & step-in touring bindings. 68 range of motion in tour mode	25 - 31.5	\$807.01	IT
316210	La Sportiva	88I	SIDERAL 2.0	LA SPORTIVA The Grilamid shell has a fit & shape allowing wider range of feet fit & provides compatibility w/every ski touring binding on the market including the trab tr2. Fast Lock System consists of the unique Vertebra Technology w/Cam Closure System which allows a lightning fast transition from ski to walk mode or back.	25 - 31.5	\$626.81	IT
316210	La Sportiva	88L	SPECTRE 2.0	LA SPORTIVA THE LARGEST RANGE OF CUFF ROTATION IN ITS CLASS. PATENTED DESIGN ALLOWS FOR FULL 60 degreee ANKLE MOVEMENT, WHILE VERTEBRA CONSTRUCTION PROVIDES SUPPORT DOWNHILL. WORKS W/ALL TECH, TR2 & STEP-IN AT BINDINGS, FOR MORE VERSATILITY & COMPATIBILITY.	25 - 31.5	\$609.73	IT
316210	La Sportiva	88L-W	STARLET	LA SPORTIVA WOMENS The Grilamid shell has a fit & shape allowing wider range of feet fit & provides compatibility w/every ski touring binding on the market including the trab tr2. Fast Lock System consists of the unique Vertebra Technology w/Cam Closure System which allows a lightning fast transition from ski to walk mode or back.	25 - 31.5	\$626.81	IT
316210	La Sportiva	971	Miura Climbing Shoe	A high performance shoe for edging control and pocket climbing performance In the line for over 10 years, the Miura is the perfect tool for performance footwork whether it be on slabs, vertical or overhanging steep rock. The high tensioned slingshot rand is tied into the powerhinge on the sole so that when small edges are weighted the shoe stretches in the back half of the shoe and not in the front. This allows you to stick on the smallest edges you can find or imagine! The multi-paneled lining gives you the perfect fit and the speed lacing system laces up in a cinch. WEIGHT: 8.43 oz • 239 g LAST: PD 75 CONSTRUCTION: Slip Lasted FIT: Performance w/ High Asymmetry UPPER: Leather LINING: Dentex MIDSOLE: 1.1mm LaspoFlex (forefoot only) SOLE: 4mm Vibram® XS Grip	33 - 46 (half sizes)	\$125.54	US

SIN	MFG Name	MFG. Number	Product Name	Product Description	Sizes Available	GSA Net Price	COO
316210	LaSportiva	211	Trango Tower Extreme	Durable abrasion resistant uppers with Honeycomb Guard™ inserts in high-wear zones, Vibram® One sole with sticky rubber and edging platforms. TPU midsole with PU inserts for full crampon compatibility, 3D Flex™ ankle for longitudinal lock out and lateral flexibility, Collar tip gaiter for additional protection and warmth.	37-48 Includes 1/2 Sizes	\$435.22	IT
316210	LaSportiva	11J-HI	Trango Cube GTX - Highlander	New seamless, waterproof upper with protective rand and direct-inject lacing system for maximum abrasion resistance and reduced weight. An integrated removable tongue made from a soft stretch fabric provides maximum comfort. La Sportiva "One" sole by Vibram® has a lower profile for a lower overall weight. Ideal terrain: Technical mixed climbing, ice climbing.	37-48 Includes 1/2 Sizes	\$362.68	IT
316210	LaSportiva	21A	Trango Tower GTX	PU midsole with EVA inserts to decrease weight, 3D Flex™ ankle for longitudinal lock-out and lateral flexibility, Gore-Tex® waterproof lining, Durable abrasion-resistant upper with Honey-Comb Guard™ inserts in high-wear zones, La Sportiva "One" sole by Vibram® with sticky rubber and edging platforms	37-48 Includes 1/2 Sizes	\$326.40	IT
316210	Lowa	104224037	BAFFIN PRO LL II MEDIUM - MENS	LOWA BAFFIN PRO LEATHER LINED MENS MEDIUM 7-13,14	MENS MEDIUM 7-13,14	\$354.16	DE
316210	Lowa	104244037	BAFFIN PRO LL II WIDE - MENS	LOWA BAFFIN PRO LEATHER LINED MENS WIDE 7-13,14	MENS WIDE 7-13,14	\$354.16	DE
316210	Lowa	204204049	BAFFIN PRO LL II MEDIUM - WOMENS	LOWA BAFFIN PRO LEATHER LINED WOMENS WIDE 5-10.5	WOMENS WIDE 5-10.5	\$354.16	DE
316210	LOWA	2104020997	Trekker - Slate	Trekker - Slate Mens Boots UPPER: Nubuck Leather, LINING: Glove Leather WEIGHT: 1700 grams 7-12,13,14	7-12,13,14	\$236.86	DE
316210	LOWA	2104040997	Trekker Wide - Slate	Trekker Wide Width - Slate Mens Boots UPPER: Nubuck Leather, LINING: Glove Leather WEIGHT: 1700 grams 7-12,13,14	7-12,13,14	\$236.86	DE
316210	LOWA	2104224397	Tibet LL - Dark Brown Slate	Tibet LL - Dark Brown Slate- Mens Backpacking Boots-UPPER: Nubuck Leather, LINING: Glove Leather, WEIGHT: 1900 grams M- 7-12, 13, 14	M- 7-12, 13, 14	\$298.45	De
316210	LOWA	2104244397	Tibet LL WIDE - Dark Brown Slate	Tibet LL WIDE - Dark Brown Slate- Mens Backpacking Boots-UPPER: Nubuck Leather, LINING: Glove Leather, WEIGHT: 1900 grams M- 7-12, 13, 14	M- 7-12, 13, 14	\$298.45	De
316210	Lowa	2106449499	Camino GTX Flex	Lowa Camino GTX FLEX Mens Trekking boots -Dark Grey / Blk Benchmark boot for Trekking. Ultimate fit and comfort Upper allows for more flexible lacing on the instep	7 - 12, 13, 14	\$245.55	DE
316210	Lowa	2106805599	Tibet GTX - Mens	Lowa Tibet GTX -Backpacking boots Sepia Black Hard-duty backpacking boots ideal for carrying heavy (50+ lbs.) loads, over long distances in extreme conditions. Upper: Nubuck leather, Waterproof GORE-TEX lining reduces hot spots	7 - 12, 13, 14	\$298.45	DE
316210	Lowa	2108780731	ELITE DESERT COYOTE OP MENS	LOWA- Elite Desert coyote OPS 8 - 12,13,14	8 - 12,13,14	\$271.50	SK
316210	Lowa	2108940492	Hunter GTX EVO Extreme	Lowa Hunter GTX EVO Extreme Highly supportive, tall 10" shafted boot for hunters going after big game in rocky, rugged terrain, above the tree line. Insulated and waterproof/breathable GORE-TEX	7 - 12, 13, 14	\$347.57	DE
316210	Lowa	2108965599	Tibet GTX HI	Lowa Tibet GTX HI -Backpacking boots Mens Sepia Black A taller version of the Tibet GTX w/an extra hook's worth of height for added support & stability in tough terrain. Ideal for carrying heavy 50+ lbs packs. Waterproof/breathable	7 - 12, 13, 14	\$321.12	DE
316210	Lowa	3105310731	ZEPHYR TF HI COYOTE OP	Lowa - Zephyr Hi TF; coyote OP; Sizes Available: 7.5 - 12,13,14	7.5 - 12,13,14	\$174.52	SK
316210	Lowa	3105320410	Zephyr GTX HI TF - Desert	Lowa Zephyr GTX HI TF Boot. DESERT Lightweight, tall, 8 inch, waterproof/breathable desert boot with monowrap frame technology. Seamless, waterproof GORE-TEX lining reduces hot spots. Split leather and Cordura upper. FOOTBED: Climate control/footbed with comfort perforations to improve breathability. OUTSOLE: Cross. Lightweight, tall, 8 inch, waterproof/breathable desert boot with monowrap frame technology. Seamless, waterproof GORE-TEX lining reduces hot spots. Split leather and Cordura upper. FOOTBED: Climate control/footbed with comfort perforations to improve breathability. OUTSOLE: Cross.	8-12, 13, 14	\$181.32	DE
316210	Lowa	3105320731	ZEPHYR TF GTX HI COYOTE OP	Lowa-Zephyr GTX HI TF; coyote OP; 8 - 12,13,14	8 - 12,13,14	\$186.16	SK
316210	Lowa	3105320934	Zephyr GTX HI TF - Sage	Lowa Zephyr GTX HI TF Boot SAGE Lightweight, tall, 8 inch, waterproof/breathable desert boot with monowrap frame technology. Seamless, waterproof GORE-TEX lining reduces hot spots. Split leather and Cordura upper. FOOTBED: Climate control/footbed with comfort perforations to improve breathability. OUTSOLE: Cross.	8 - 12, 13, 14	\$181.32	DE
316210	Lowa	3105320999	ZEPHYR GTX HI TF BLACK - MENS	Lowa-Zephyr GTX HI TF; black; 7.5 - 12,13,14	MENS 7.5 - 12,13,14	\$186.16	SK
316210	LOWA	3105350411	Zephyr Mid TF - Desert	Lowa Zephyr Mid Task Force Desert Mens Boots - UPPER: Split leather and CORDURA®. LINING: Quick-dry, breathable fabric, with climate control footbed. MIDSOLE: PU with Monowrap® construction for comfort and stability. M 7.5-12, 13,14	M 7.5-12, 13,14	\$147.32	SK
316210	Lowa	3105350731	ZEPHYR DESERT MID COYOTE OP	Lowa - Zephyr Desert Mid TF; coyote OP; Sizes Available: 7.5 - 12,13,14	7.5 - 12,13,14	\$151.25	SK
316210	LOWA	3105370411	LOWA ZEPHYR GTX MID TF BOOT - DESERT	Lowa Zephyr GTX Mid TF Boot - Desert. Durable light everyday patrol shoe. Ideal for city & park use. Flexible enough to run in. Bi-injection PU mid-sole with Monowrap construction for stability.LOWA patented Cross sole. GORE-TEX lining for climate control and partial waterproofing. Split leather & Fabric upper.	M 7.5-12,13,14	\$171.34	DE
316210	Lowa	3105370731	ZEPHYR GTX MID TF COYOTE OP	Lowa - Zephyr GTX Mid TF; coyote OP; Sizes Available: 7.5 - 12,13,14	7.5 - 12,13,14	\$162.88	SK
316210	LOWA	3105370934	LOWA ZEPHYR GTX BOOT - AF COMMANDO SAGE	Lowa Zephyr GTX Boot - AF Commando Sage. Durable light everyday patrol shoe. Ideal for city & park use. Flexible enough to run in. Bi-injection PU mid-sole with Monowrap construction for stability. LOWA patented Cross sole. GORE-TEX lining for climate control and partial waterproofing. Split leather & Fabric upper.	M 7.5-12,13,14	\$173.46	DE
316210	LOWA	3105370999	LOWA ZEPHYR GTX MID TF BOOT - Black	Lowa Zephyr GTX Mid TF Boot - Desert. Durable light everyday patrol shoe. Ideal for city & park use. Flexible enough to run in. Bi-injection PU mid-sole with Monowrap construction for stability.LOWA patented Cross sole. GORE-TEX lining for climate control and partial waterproofing. Split leather & Fabric upper.	M 7.5-12,13,14	\$173.46	DE
316210	Lowa	3105890731	ZEPHYR GTX LO TF COYOTE OP	Lowa - Zephyr GTX Lo TF; coyote OP; Sizes Available: 7.5 - 12,13,14	7.5 - 12,13,14	\$147.37	SK
316210	Lowa	3105890999	ZEPHYR GTX LO TF BLACK	Lowa - Zephyr GTX Lo TF; black; Sizes Available: 7.5 - 12,13,14	7.5 - 12,13,14	\$147.37	SK
316210	LOWA	3106620999	Z-6S GTX - Black	Lowa Z-6S Black - Mens Rugged, multi-function boots designed for demanding missions, while carrying heavy packs over varied and extreme terrain.Waterproof, breathable Gortex lining. Sizes: 7.5-13,14,15,16 Please specify size when ordering.	Sizes: 7.5-13,14,15,16	\$234.22	SK
316210	LOWA	3106640410	Z-8S GTX - Desert	Low z-8S Desert Mens Rugged, multi-function boots designed for demanding missions, while carrying heavy packs over varied and extreme terrain Waterproof, breathable Gortex lining. Sizes: 7.5-13,14,15,16 Please specify size when ordering.	Sizes: 7.5-13,14,15,16	\$256.89	SK
316210	Lowa	3106640731	Z-8S GTX COYOTE OP MENS	Lowa-Z - 8S GTX ; coyote OP; 7.5 - 13,14, 15, 16	MENS 7.5 - 13,14, 15, 16	\$263.74	SK

SIN	MFG Name	MFG. Number	Product Name	Product Description	Sizes Available	GSA Net Price	COO
316210	LOWA	3106680410	Z-6S GTX - Desert	Lowa Z-6S Desert - Mens Rugged, multi-function boots designed for demanding missions, while carrying heavy packs over varied and extreme terrain. Waterproof, breathable Gortex lining. Sizes: 7.5-13,14,15,16 Please specify size when ordering.	Sizes: 7.5-13,14,15,16	\$234.22	SK
316210	LOWA	3106680934	Z-6S GTX - Sage	Lowa Z-6S Sage - Mens Rugged, multi-function boots designed for demanding missions, while carrying heavy packs over varied and extreme terrain. Waterproof, breathable Gortex lining. Sizes: 7.5-13,14,15,16 Please specify size when ordering.	Sizes: 7.5-13,14,15,16	\$234.22	SK
316210	LowA	3106690731	Z-6S COYOTE OP MENS	LowA - Z - 6S; coyote OP; Sizes Available: 7.5 - 13,14, 15, 16	MENS 7.5 - 13,14, 15, 16	\$224.95	SK
316210	LOWA	3109454554	LowA Renegade Mid GTX Sepia	LowA Renegade GTX Mid Boot - Sepia. Sturdy, all-purpose, all-terrain, all-weather boot. Uppers in water-repellent Nubuck leather with Cordura ankle band. GORE-TEX lining for ultimate climate comfort and waterproof protection. Vibram Evo outsole for improved grip and shock absorption. Lighter weight than traditional hiking boots - geared to day hiking or exercise walking. They excel for on-trail use, hiking with light day or hydration packs, scrambling, or everyday outdoor use. Derby cut lacing to comfortably fit a wider range of feet, plus a bi-injection mid-sole for greater comfort and stability.	M 7.5-12,13,14,15,16	\$198.25	CZ
316210	LowA	3205370410	ZEPHYR GTX MID TF WOMENS DESERT	LOWA - Zephyr GTX Mid TF WS, desert, sizes 5.5 - 10.5	WOMEN 5.5 - 10.5	\$162.88	SK
316210	LowA	3205370731	ZEPHYR GTX MID TF WOMENS COYOTE OP	LowA - Zephyr GTX Mid TF WS; coyote OP; Sizes Available: 5.5 - 11	WOMEN 5.5 - 11	\$162.88	SK
316210	LowA	3205379999	ZEPHYR GTX MID TF WOMENS BLACK	LowA-Zephyr GTX Mid TF WS; black: 5.5 - 11	WOMEN 5.5 - 11	\$162.88	SK
316210	LowA	3206640731	Z-8S GTX COYOTE OP WOMENS	LowA - Z - 8S GTX; coyote OP WOMENS; Sizes Available: 5 - 7	WOMEN 5 - 7	\$263.74	SK
316210	LowA	3206690731	Z-6S COYOTE OP WOMENS	LowA - Z - 6S; coyote OP WOMENS; Sizes Available: 5 - 7	WOMEN 5 - 7	\$240.46	SK
316210	Matterhorn	102494	10" Waterproof All Leather Field Boot -	Waterproof/Breathable GORE-TEX® Bootie,Water-Resistant, Breathable Full Grain Leather,Thinsulate™ Insulation- 200 grams (102494) or 600 grams (602494),Goodyear Welt Construction,Leather Comfort Collar,Cambrelle® Breathable Moisture Wicking Lining,Removable DRYZ® Moisture/Odor Control Shock Absorbing Cushioned Insert,Shock Absorbing Polyurethane Midsole,Fiberglass Shank,Non-Metallic Safety Toe Box: Meets all current ANSI Requirements for Safety Toe Standards, Class 75,Vibram® Sierra Outsole	Men's: N 9-12,13 M 4-12,13,14,15 W 5-12,13,14,15 XW 7-12,13,14,15	\$230.34	US
316210	Matterhorn	12700	10 Inch Waterproof Search & Rescue Boot	Water-Resistant, Breathable Full Grain Leather,Fabric Upper of 7oz. Kevlar® / Nomex® Ripstop,Goodyear Welt Construction,Patented Matterhorn "Tiger Tip®",Removable DRYZ® Moisture/Odor Control Shock Absorbing Cushioned Insert,Kevlar® Upper and Sole Stitching,Blue Omaha Breathable Moisture Wicking Lining,CROSSSTECH® Fabric for Blood and Body Fluid Penetration Resistance w/ Waterproof Breathable Performance Bootie,Zinc Coated Ladder Shank,Non-Metallic Safety Toe, Stainless Steel Bottom Plate: Meets all Current ANSI Standards, Class 75,Vibram® One Piece Lug Fire Resistant Compound	Men's: M 7-12,13,14 W 7-12,13,14	\$243.18	US
316210	Matterhorn	1597	8 Inch Field Boot - Black	Waterproof/Breathable GORE-TEX® Bootie,Water-Resistant, Breathable Full Grain Leather,Intellitemp® Phase Change Insulation Technology,Cambrelle® Breathable Moisture Wicking Lining,Goodyear Welt Construction,Leather Comfort Collar,Patented Double Bootie Construction,Shock Absorbing Polyurethane Midsole,Fiberglass Shank,Vibram® Sierra Outsole	Women's 6-10	\$256.88	US
316210	Matterhorn	1697	8 Inch Field Boot - Black	Waterproof/Breathable GORE-TEX® Bootie,Water-Resistant, Breathable Full Grain Leather,Intellitemp® Phase Change Insulation Technology,Cambrelle® Breathable Moisture Wicking Lining,Goodyear Welt Construction,Leather Comfort Collar,Patented Double Bootie Construction,Shock Absorbing Polyurethane Midsole,Fiberglass Shank,Vibram® Sierra Outsole	Men's: M 7-12,13,14 W 7-12,13,14	\$231.19	US
316210	Matterhorn	1949	10" Waterproof All Leather Field Boot -	Waterproof/Breathable GORE-TEX® Bootie,Water-Resistant, Breathable Full Grain Leather,Thinsulate™ Insulation 200 or 600 grams,Cambrelle® Breathable Moisture Wicking Lining,Goodyear Welt Construction,Leather Comfort Collar,Cambrelle® Breathable Moisture Wicking Lining,Removable DRYZ® Moisture/Odor Control Shock Absorbing Cushioned Insert,Shock Absorbing Polyurethane Midsole,Fiberglass Shank,Vibram® Kletterlift Outsole	Men's: N 5-12,13,14 M 5-12,13,14,15,16 W 5-12,13,14,15,16 XW 5-12,13,14,15,16	\$214.06	US
316210	Matterhorn	1999	8" Non-Insulated Combat Boot - Black	Waterproof/Breathable GORE-TEX® Bootie,Water-Resistant, Breathable Full Grain Leather,Cambrelle® Breathable Moisture Wicking Lining,CORDURA® High Performance Fabric,Goodyear Welt Construction,Leather Comfort Top Band,Shock Absorbing Polyurethane Midsole,Removable DRYZ® Moisture/Odor Control Shock Absorbing Cushioned Insert,Fiberglass Shank,Non-Metallic Safety Toe Box: Meets all current ANSI Requirements for Safety Toe Standards, Class 75 and Electrical Hazard,Vibram® Sierra Outsole	Men's: M 6-12,13,14 W 6-12,13,14	\$197.79	US
316210	Matterhorn	4402494	10" Waterproof Desert Tan Fleshout Leather	Waterproof/Breathable GORE-TEX® Bootie Top Quality Desert Tan Fleshout Leather Thinsulate™ Insulation 400 grams Cambrelle® Breathable Moisture Wicking Lining Goodyear Patented Flex-Welt™ Construction Removable DRYZ® Moisture/Odor Control Shock Absorbing Cushioned Insert Patented PGD Shock Absorbing Polyurethane Midsole Fiberglass Shank Vibram® Sierra Outsole Non-Metallic Safety Toe	M 4-12, 13,14,15,16 W 5-12, 13,14,15	\$280.01	US
316210	Matterhorn	8602494	10" Sage Waterproof Insulated Boot	Water-Resistant, Breathable Full Grain Leather, Waterproof/Breathable GORE-TEX® Bootie, Moisture Wicking Lining, Thinsulate™ Insulation 600 grams, Removable Dryz® with X-Static® Polyurethane Insert, Non-Metallic Safety Toe: Meets ASTM F2413 Standard for Protective Footwear, Non-Metallic Shank, Goodyear Patented Flex-Welt™ Construction, Polyurethane Midsole, Vibram® OMNI-TRAC 1321 Fire and Slip Resistant Outsole, Berry Amendment Compliant	Mens M and W 7-12,13,14	\$300.56	US
316210	Nick's Custom Boots	25-V	Hot Shot 10" NFPA Firefighting Boots	Hot Shot 10" Black NFPA certified fire fighting boot, Hand stitched welt, Extra thick mid-sole w / vibram lug outsole	D 7-12,13; E 7-12,13; EE 7-12,13	\$361.79	US
316210	Nick's Custom Boots	55 F	Forester	Forester 10" Black NFPA certified forestry / work boot, Hand stitched welt, Extra thick vibram lug outsole and mid-sole	D 7-12,13; E 7-12,13; EE 7-12,13	\$314.64	US

SIN	MFG Name	MFG. Number	Product Name	Product Description	Sizes Available	GSA Net Price	COO
316210	Nick's Custom Boots	55 R	Ranger	Ranger 8" Walnut work boot, Hand stitched welt, Extra thick mid-sole w / mini-vibram lug outsole	D 7-12,13; E 7-12,13; EE 7-12,13	\$299.23	US
316210	Rocky Brands, Inc.	6101	Rocky S2V Desert Tan Steel Toe Tactical Assault Boot -Mens	1,000 Denier Cordura in Sides and Panels in Treated PTFE Coat for Flame Resistance; Drainage Vents Move Water Out and Prevent Debris from Entering and Enhance Breathability; Made in the USA, Berry Compliant ;Wicking Dri-Lex Lining and Stretch Lycra Tongues Hug feet for Secure Fit ASTM F2412-05 and F2413-05 Standards for Impact & Compression and EH Rated	M / W 4-12, 13, 14, 15	\$205.50	US
316210	Rocky Brands, Inc.	6108	Rocky S2V Sage Steel Toe Tactical Assault Boot -Mens	1,000 Denier Cordura in Sides and Panels in Treated PTFE Coat for Flame Resistance; Drainage Vents Move Water Out and Prevent Debris from Entering and Enhance Breathability; Made in the USA, Berry Compliant ;Wicking Dri-Lex Lining and Stretch Lycra Tongues Hug feet for Secure Fit; ASTM F2412-05 and F2413-05 Standards for Impact & Compression and EH Rated	M / W 4-12, 13, 14, 15	\$205.50	US
316210	Rocky Brands, Inc.	6826	Rocky Steel Toe Desert Tan Hot Weather Berry Compliant Combat Boots	Dual density Vibram 360 degree rubber outsole ;Removable cushioned footbed ;Suede & Cordura combination upper ;Unlined ;Made in USA, Berry Compliant;Steel Toe ASTM F2412-05 and F2413-05 Standards for Impact & Compression and EH Rated	M / W 4-12, 13, 14, 15	\$128.42	US
316210	Rocky Brands, Inc.	7901	Rocky Basics Temperate Weather GTX Waterproof Boot 0007901 Desert Tan Berry Compliant Combat Boots	Durably Waterproof and Breathable Gore-Tex Fabric;Dual density Vibram 360 degree rubber outsole ;ACU approved ;US Air Force approved ;US Army approved ;Made in USA, Berry Compliant ;ACU approved ;FR approved	M 3-12,13,14, 15; W 4-12,13,14,15	\$166.96	US
316210	Rocky Brands, Inc.	7902	Rocky Basics Temperate Weather GTX Waterproof Boot 0007902 Sage Green Berry Compliant Combat Boots	Durably Waterproof and Breathable Gore-Tex Fabric;Dual density Vibram 360 degree rubber outsole ;ACU approved ;US Air Force approved ;US Army approved ;Made in USA, Berry Compliant ;ACU approved ;FR approved	M 3-12,13,14, 15; W 4-12,13,14,15	\$166.96	US
316210	Rocky Brands, Inc.	282 A	Rocky Desert Tan Hot Weather Berry Compliant Combat Boots 000282	Dual density Vibram 360 degree rubber outsole ;Removable cushioned footbed ;Suede & Cordura combination upper ;Unlined ;Made in USA, Berry Compliant	M 3-12,13,14, 15; W 4-12,13,14,15	\$128.42	US
316210	Scarpa	60100G	Nepal Pro Back Packing boots - Mens	The Mens Scarpa Nepal Pro GTX offers is a 3 season walking boot, suited to year-round use in all but serious winter conditions. The Nepal is especially suited to adventurers trekking in warm conditions owing to the high level of breathability given by the Nubuck leather upper. The upper has an ergonomic flex zone to give better flexibility at the ankle, and is half leather lined for added comfort. There is also a substantial rubber rand for protection against abrasion etc. The sole unit is built by Vibram and is their ' Megan' unit featuring a combination PU/EVA wedge for lightness and shock absorption, combined with exceptional stability.	Mens 6.5 -13,14	\$233.10	IT
316210	Scarpa	60100GL	Nepal Pro Back Packing boots -Womens	The Womens Scarpa Nepal Pro GTX offers is a 3 season walking boot, suited to year-round use in all but serious winter conditions. The Nepal is especially suited to adventurers trekking in warm conditions owing to the high level of breathability given by the Nubuck leather upper. The upper has an ergonomic flex zone to give better flexibility at the ankle, and is half leather lined for added comfort. There is also a substantial rubber rand for protection against abrasion etc. The sole unit is built by Vibram and is their ' Megan' unit featuring a combination PU/EVA wedge for lightness and shock absorption, combined with exceptional stability.	Womens 5.5-11	\$233.10	IT
316210	Scarpa	60121G	Barun GTX Hiking Boots- Mens	The Men's Barun GTX Boot by Scarpa is built for rugged terrain without any unnecessary weight. Features: Gore-Tex lining Bi-directional ankle flex Toe rand for critical protection Easily tensioned lacing system Vibram sole for excellent traction and durability Upper: Nubuck Suede Lining: GORE-TEX Midsole: men's Performance-flex women's Comfort-flex Sole	Mens 6-13,14	\$214.27	IT
316210	Scarpa	60121GL	Barun GTX Hiking Boots- Womens	The Women's Barun GTX Boot by Scarpa is built for rugged terrain without any unnecessary weight. Features: Gore-Tex lining Bi-directional ankle flex Toe rand for critical protection Easily tensioned lacing system Vibram sole for excellent traction and durability Upper: Nubuck Suede Lining: GORE-TEX Midsole: men's Performance-flex women's Comfort-flex Sole	Womens 5.5-11	\$214.27	IT
316210	Scarpa	66002/S07	SL M3 Back Packing Boots- Mens	The Men's SL M3 Boot by Scarpa is their premier backpacking boot; whether you are doing a long trail, carrying a heavy load, or hiking in rough terrain, you should consider the SL M3. Blending durability, support, and comfort, this boot incorporates the latest technology in hiking and backpacking footwear. Features: Improved! Leather lined tongue and cuff for comfort Silicone-impregnated full-grain leather, baby Available in widths and women's sizing Articulated cuff Legendary performance	Mens 6-15	\$224.14	IT
316210	Scarpa	66002L/S07	SL M3 Back Packing Boots- Womens	The Women's SL M3 Boot by Scarpa is their premier backpacking boot; whether you are doing a long trail, carrying a heavy load, or hiking in rough terrain, you should consider the SL M3. Blending durability, support, and comfort, this boot incorporates the latest technology in hiking and backpacking footwear. Features: Improved! Leather lined tongue and cuff for comfort Silicone-impregnated full-grain leather, baby Available in widths and women's sizing Articulated cuff Legendary performance	Womens 5.5-10	\$224.14	IT
316210	Scarpa	66002W/S07	SL M3 Back Packing Boots- Mens -Wide	The Men's SL M3 Boot by Scarpa is their premier backpacking boot; whether you are doing a long trail, carrying a heavy load, or hiking in rough terrain, you should consider the SL M3. Blending durability, support, and comfort, this boot incorporates the latest technology in hiking and backpacking footwear. Features: Improved! Leather lined tongue and cuff for comfort Silicone-impregnated full-grain leather, baby Available in widths and women's sizing Articulated cuff Legendary performance	Mens 6-15	\$224.14	IT
316210	Scarpa	67045G	Kailash GTX Hiking Boots-Mens	The Men's Kailash GTX Boot by Scarpa is ideal for trail hiking, rugged day hikes, and regular abuse; a medium weight boot with maximum comfort. Features: New sole! Super shock-absorbing Vibram Hi-Trail Lite Toe rand for critical protection Gore-Tex lining Bi-directional ankle flex Upper: Suede Lining: Gore-Tex Midsole: Comfort-Flex Sole	Mens 6-13,14	\$165.85	IT

SIN	MFG Name	MFG. Number	Product Name	Product Description	Sizes Available	GSA Net Price	COO
316210	Scarpa	67045GL	Kailash GTX Hiking Boots-Womens	The Women's Kailash GTX Boot by Scarpa is ideal for trail hiking, rugged day hikes, and regular abuse: a medium weight boot with maximum comfort. Features: New sole! Super shock-absorbing Vibram Hi-Trail Lite Toe rand for critical protection Gore-Tex lining Bi-directional ankle flex Upper: Suede Lining; Gore-Tex Midsole; Comfort-Flex Sole	Womens 5.5-11	\$165.85	IT
316210	Weinbrenner	504-6383	Thorogood 14"Womens Hellfire Black Hornet Structural Oblique Toe Bunker	Upper: Black Boulder WATERPROOF, FLAME, and Cut-Resisting Leather, Vibram®, Rubber Toe and Heel Protection and FLAME Resisting ADVANCE™ Shaft, with "Shark-Skin Covered Shin Guard"; Lining: Comfort Weave / Sympatex® WATERPROOF Barrier, Blood Borne Pathogen Compliant; Shank: Steel Triple Ladder Shank; Outsole: Exclusive Vibram® FIRE Sole with chiseled edge lugs; Special Features: Kevlar® Stitching, Flexible L-Protection® Puncture-Resisting Insole Material.ASTM F 2413-05 M/I/75/C/75 Oblique Steel Toe. Tested for and meets CAN/CSA-Z195 ELECTRIC SHOCK RESISTANCE. Electrical Hazard. 3M™ Scotchlite™ Reflective Material - High Visibility Piping. Made in USA by ISO 9001 Certified Shoe Company.	5-10 N,M, W	\$398.95	US
316210	Weinbrenner	504-6391	Thorogood Hellfire Womens 10" Structural/T.R.I./ Wildland Fire Fighting Boot	Upper: Black Boulder WATERPROOF, FLAME, and Cut Resisting Leather With Scuff-Resisting Vibram® Rubber Toe Bumper; Lining: Comfort Weave / Sympatex® WATERPROOF Barrier, Blood Borne Pathogen Compliant; Shank: Steel Triple Ladder Shank; outsole: Exclusive Vibram® FIRE Sole with chiseled edge lugs; Special Features: I-Met Metatarsal Protection. L-Protection® Puncture-Resisting Insole Material. This utility and rescue and recovery protective ensemble footwear element meets the requirements of NFPA 1951, Standard on Protective Ensembles for Technical Rescue Incidents, 2007 Edition. This wildland fire fighting protective footwear meets the requirements of NFPA 1977, Standard on Protective Clothing and Equipment for Wildland Fire Fighting, 2005 Edition. ASTM F 2413-05 M/I/75/C/75 Steel Toe. Electrical Hazard. Tested For and Meets CAN/CSA-Z195 Electrical Shock Resistance Standard. Made in USA by ISO 9001 Certified Shoe Company.	5-10 N,M, W	\$398.95	US
316210	Weinbrenner	804-6391	Thorogood Hellfire Mens 10" Structural/T.R.I./ Wildland Fire Fighting Boot	Upper: Black Boulder WATERPROOF, FLAME, and Cut Resisting Leather With Scuff-Resisting Vibram® Rubber Toe Bumper; Lining: Comfort Weave / Sympatex® WATERPROOF Barrier, Blood Borne Pathogen Compliant; Shank: Steel Triple Ladder Shank; outsole: Exclusive Vibram® FIRE Sole with chiseled edge lugs; Special Features: I-Met Metatarsal Protection. L-Protection® Puncture-Resisting Insole Material. This utility and rescue and recovery protective ensemble footwear element meets the requirements of NFPA 1951, Standard on Protective Ensembles for Technical Rescue Incidents, 2007 Edition. This wildland fire fighting protective footwear meets the requirements of NFPA 1977, Standard on Protective Clothing and Equipment for Wildland Fire Fighting, 2005 Edition. ASTM F 2413-05 M/I/75/C/75 Steel Toe. Electrical Hazard. Tested For and Meets CAN/CSA-Z195 Electrical Shock Resistance Standard. Made in USA by ISO 9001 Certified Shoe Company.	5-14,15,16,17,18 M,W,XW	\$498.70	US
316210	Weinbrenner Shoe Company (Thorogood)	504-6379	Power EMS	Womens - Upper: Black Prime WATERPROOF, FLAME, and Cut-Resisting Leather, 3M™ Scotchlite™ Reflective Material. Construction: Goodyear Storm Welt Lining: Cambrelle® / Sympatex® WATERPROOF Barrier, Blood Borne Pathogen Compliant. Insole: Dual Density Polyurethane Removable Footbed Midsole: Rubber Shank: Steel Triple Ladder Shank Outsole: Vibram® FIRE and ICE Slip Resisting Sole Special Features: Flexible L-Protection™ Puncture-Resisting Insole Material. Two Row Padded Leather Top. Shaft Vapor Exhaust Vents. This footwear meets the requirements of NFPA 1999, Standard on Protective clothing for Emergency Medical Operations, 2008 Edition. This wildland fire fighting protective footwear meets the requirements of NFPA 1977, Standard on Protective Clothing and Equipment for Wildland Fire Fighting, 2005 Edition. ASTM F 2413/05 M/I/75/C/75 COMPOSITE SAFETY TOE. Electrical Hazard. Tested For and Meets CAN/CSA/Z195 18,000 Volts Electric Shock Resistance Standard. 3M™ Scotchlite™ Reflective Ma	N, M and W: 5-10	\$329.12	US
316210	Weinbrenner Shoe Company (Thorogood)	804-3550	8" Waterproof / Insulated Logger boot -	Upper: Brown Trail Crazyhorse Oil-Tanned Leather Construction: Goodyear Welt Outsole: Vibram® Tacoma Logger Insulation: B-400 Thinsulate™ Ultra Insulation Insole: Removable Dual Density Ultimate Shock Absorption™ Insert on Paron® 4000 Comfort Cushion Midsole: Rubber Shank: Steel Triple Ladder Special Features: ASTM F 2413-05 M/I/75/C/75 Steel Toe. Electrical Hazard. Tested For and Meets CAN/CSA-Z195 18,000 Volts Electrical Shock Resistance Standard. Sympatex® WATERPROOF Barrier. Made in USA by ISO 9001 Certified Shoe Company.	D 7-12,13,14; EEE 7-12,13,14	\$258.39	US
316210	Weinbrenner Shoe Company (Thorogood)	804-4820	6" American Heritage Steel Toe Boot	Upper: Tobacco Gladiator Full Grain Oil-Tanned Leather Construction: Goodyear Storm Welt Outsole: Thorogood Dual Density Polyurethane Comfort Sole with 90° Heel Lining: Comfort Weave Vamp Insole: Removable Dual Density Polyurethane "SHOCK ZONE" Insert with Air Flow Vents Midsole: Polyurethane Shank: Fiberglass Special Features: ASTM F 2413-05 M/I/75/C/75 Steel Toe. Electrical Hazard. Solid Brass Hardware, Triple Stitched at Key Stress Points, Unlined. Made in USA by ISO 9001 Certified Shoe Company.	D 7-12,13,14; EEE 7-12,13,14	\$176.78	US

SIN	MFG Name	MFG. Number	Product Name	Product Description	Sizes Available	GSA Net Price	COO
316210	Weinbrenner Shoe Company (Thorogood)	804-6371	14" Structural FireFighting Bunker boot	Mens 14" Structural FireFighting Bunker Boot -Upper: Black Boulder WATERPROOF, FLAME, and Cut-Resisting Leather with Scuff-Resisting Vibram® Rubber Toe and Heel Bumper Construction: Goodyear Storm Welt Outsole: Exclusive Vibram® FIRE Sole with chiseled edge lugs Lining: Comfort Weave / Sympatex® WATERPROOF Barrier, Blood Borne Pathogen Compliant Insole: Polyurethane Removable Footbed on Flexible Double Rubber Midsole: Rubber Shank: Steel Triple Ladder Shank Special Features: Flexible L-Protection™ Puncture-Resisting Insole Material, ASTM F 2413-05 M/I/75/C/75 Steel Toe, Electrical Hazard, Tested for and meets CAN/CSA-Z195 ELECTRIC SHOCK RESISTANCE. Made in USA by ISO 9001 Certified Shoe Company.	M, W and XW; 5-14,15,16,17,18	\$388.07	US
316210	Weinbrenner Shoe Company (Thorogood)	804-6378	14" Ultra-Met Structural / T.R.I. Bunker	Upper: Black Boulder WATERPROOF, FLAME, and Cut Resisting Leather, Vibram®, Rubber Toe and Heel Protection and FLAME Resisting ADVANCE™ Shaft, Goodyear Storm Welt,Thorogood's Exclusive Vibram® FIRE Sole Comfort Weave / Sympatex® WATERPROOF Barrier, Blood Borne Pathogen Compliant Polyurethane Removable Insert on Flexible Non-Woven Double Insole I-Met® Metatarsal Protection, L-Protection™ Puncture-Resisting Insole Material, Built In Shin Guard, This utility and rescue and recovery protective ensemble footwear element meets the requirements of NFPA 1951 Standard on Protective Ensembles for Technical Rescue Incidents, 2007 Edition, ASTM F 2413-05 M/I/75/C/75 EH PR. Tested for and meets CAN/CSA-Z195 ELECTRIC SHOCK RESISTANCE. Made in USA by ISO 9001 Certified Shoe Company.	M 5-14,15,16,17,18; W 5-14,15,16,17,18; XW 5-14,15,16,17,18	\$435.22	US
316210	Weinbrenner Shoe Company (Thorogood)	804-6379	Power EMS	Mens - Upper: Black Prime WATERPROOF, FLAME, and Cut-Resisting Leather, 3M™ Scotchlite™ Reflective Material Construction: Goodyear Storm Welt Lining: Cambrelle® / Sympatex® WATERPROOF Barrier, Blood Borne Pathogen Compliant. Insole: Dual Density Polyurethane Removable Footbed Midsole: Rubber Shank: Steel Triple Ladder Shank Outsole: Vibram® FIRE and ICE Slip Resisting Sole Special Features: Flexible L-Protection™ Puncture-Resisting Insole Material, Two Row Padded Leather Top, Shaft Vapor Exhaust Vents. This footwear meets the requirements of NFPA 1999, Standard on Protective clothing for Emergency Medical Operations, 2008 Edition, This wildland fire fighting protective footwear meets the requirements of NFPA 1977, Standard on Protective Clothing and Equipment for Wildland Fire Fighting, 2005 Edition, ASTM F 2413/05 M/I/75/C/75 COMPOSITE SAFETY TOE, Electrical Hazard, Tested For and Meets CAN/CSA/Z195 18,000 Volts Electric Shock Resistance Standard, 3M™ Scotchlite™ Reflective Mat	M, W and XW; 5-14,15,16,17,18	\$329.12	US
316210	Weinbrenner Shoe Company (Thorogood)	804-6446	8" Station Front Zip Safety Boot	8" Oblique toe Black Smooth High Shine Leather; goodyear welt; Fiberglass Shank, Oil, Heat, and slip resistant outsole	M 6-12,13,14,15; W7-12,13,14; XW 8-12,13	\$178.60	US
316210	Weinbrenner Shoe Company (Thorogood)	814-4220	6" American Heritage Non Brown Work Boot	Upper: Black Walnut Badlands Oil-Tanned Leather Construction: Goodyear Welt Outsole: Thorogood Dual Density Polyurethane Comfort Sole with 90° Heel Lining: Cotton Drill Vamp Insole: Removable Dual Density Polyurethane "SHOCK ZONE" Insert with Air Flow Vents Midsole: Polyurethane Shank: Fiberglass Special Features: Solid Brass Hardware, Triple Stitched and Riveted at Key Stress Points, Unlined, Made in USA by ISO 9001 Certified Shoe Company.	D 7-12,13,14; EE 7-12,13,14	\$179.78	US
316210	Weinbrenner Shoe Company (Thorogood)	834-6371	10" Wildland Fire Boot	Mens Wildland Fire Boot 10" - Upper: 6-7 oz. Black Oil Tanned Logger Leather, FLAME and Cut-Resisting Leather. Construction: Goodyear Storm Welt Outsole: Thorogoods Vibram® FIRE Sole Lining: Dri-Lex® Tongue, Comfort Weave Vamp Insole: Removable Felt Footbed Midsole: Rubber and Leather Shank: Composite Special Features: Kevlar® Thread and Lace, Tip Stitching for Extra Secure Sole Attachment, Meets the Requirements of NFPA 1977 Protective Clothing and Equipment for Wildland Fire Fighting, Current Edition, UL Certified, Made in USA by ISO 9001 Certified Shoe Company.	M,W,and XW5-14;15	\$257.49	US
316210	Weinbrenner Shoe Company (Thorogood)	834-6373	10" Wildland Fire Boot w / Removable Zip	Upper: Black Panther Oiled Leather, FLAME and Cut-Resisting Leather with Scuff-Resisting "Shark-Skin" Leather Toe and Heel Counter Construction: Goodyear Storm Welt Outsole: Thorogoods Exclusive Vibram® FIRE Sole Lining: Dri-Lex® Tongue, Comfort Weave Vamp Insole: Removable Felt Footbed Midsole: Rubber and Leather Shank: Steel Triple Ladder Shank Special Features: Meets the Requirements of NFPA 1977 Protective Clothing and Equipment for Wildland Fire Fighting, Current Edition, UL Certified, Lace-in YKK Duty zipper, Made in USA by ISO 9001 Certified Shoe Company	M 5-14,15; W 5-14,15; XW 5-14,15	\$293.76	US

SIN	MFG Name	MFG. Number	Product Name	Product Description	Sizes Available	GSA Net Price	COO
316210	Weinbrenner Shoe Company (Thorogood)	834-6381	9" Wildland Fire Boot	Upper: Black Boulder, FLAME, and Cut-Resisting Leather. Construction: Goodyear Storm Welt Outsole: Thorogoods Vibram® FIRE Sole Lining: Dri-lex® Tongue, Comfort Weave Vamp Insole: Removable Felt Footbed Midssole: Rubber and Leather Shank: Steel Triple Ladder Shank Special Features: Kevlar® Thread. Meets the Requirements of NFPA 1977 Protective Clothing and Equipment for Wildland Fire Fighting, Current Edition. UL Certified. Made in USA by ISO 9001 Certified Shoe Company.	M 5-14,15; W 5-14,15; XW 5-14,15	\$243.88	US
316210	Wesco	2912SI	Timber Boot Black12" Regular Toe	Spring Heel, Rubber Sole w/ our exclusive replaceable calks	D(7-12,13), E(7-12,13)	\$363.58	US
316210	Wesco	2916SI	Timber Boot Black16" Regular Toe	Spring Heel, Rubber Sole w/ our exclusive replaceable calks	D(7-12,13), E(7-12,13)	\$407.11	US
316210	Wesco	7700100	Boss Boot Black 11" Motorcycle	# 100 Vibram Lug sole	D (7-12,13)	\$418.90	US
316210	Wesco	BKF310100F	Wesco Firestormer Black Lace-To-Toe Logg	Rolled-leather top facing , Solid brass studs and eyelets, Full-leather vamp lined with leather, Non-corrosive steel shank, Sweat resistant full-leather insole, Full-leather midsole, leather heel base, 7oz fire and water resistant upper leather Heavy black Kevlar® upper and sole stitching # 100F Vibram® Flame Resisting Sole Leather laces	D - 6-12,13; E 6-12,13	\$428.87	US
316210	Wesco	BR110100	Jobmaster Brown 10" Lace-To-Toe	# 100 Vibram Lug sole	D (7-12,13)	\$338.19	US
316210	Wesco	RW110100	Wesco Jobmaster 10" Lace-To-Toe Redwood	# 100 Vibram non-oil resistant sole and heel	D (6-12,13) E (6-12,13)	\$338.19	US
316210	ZAMBERLAN	1006	VIOZ PLUS GT	Made in Italy, the Zamberlan 1006 Vioz Plus GT Field boot is protective, robust, very comfortable, and made in a wide fit. Half way between a tall boot and a standard boot, the Zamberlan Vioz Top is ideal for enhanced protection of the ankle and features: Hydrobloc full grain leather upper; Exclusive Zamberlan Vibram rubber outsole with special structure midsole; GORE-TEX lining for utmost protection and breathability; Rubber Reinforcement System to enhance protection to the upper; Soft nubuck leather collar and notch on upper developed for max comfort and flexibility; Double hook for firm hold of foot; Wrapping tongue design for better comfort and fit; Special corrosion free treatment for the metal hardware	37-48	\$280.63	IT
316210	ZAMBERLAN	996	VIOZ GT - Men's Hiking Boots	The Italian made 996 VIOZ GT is a full-grain leather boot ideal for carrying moderate to heavy loads on extended backpacking trips. The simple and classic design also make this a great everyday boot for those who work outdoors. Handcrafted from fine Italian full-grain Hydrobloc™ treated leather with a waterproof breathable GORE-TEX® lining and moisture wicking anatomic footbeds, your feet are guaranteed to be dry and comfortable in the worst of conditions. The exclusive Zamberlan VIBRAM® 3D sole, with its deep lugs, provides great grip, comfort, wear resistance, and traction.	40-48	\$251.04	IT
316210	ZAMBERLAN	996-W	VIOZ GT - Women's Hiking Boots	The Italian made 996 VIOZ GT is a full-grain leather boot ideal for carrying moderate to heavy loads on extended backpacking trips. The simple and classic design also make this a great everyday boot for those who work outdoors. Handcrafted from fine Italian full-grain Hydrobloc™ treated leather with a waterproof breathable GORE-TEX® lining and moisture wicking anatomic footbeds, your feet are guaranteed to be dry and comfortable in the worst of conditions. The exclusive Zamberlan VIBRAM® 3D sole, with its deep lugs, provides great grip, comfort, wear resistance and traction.	37-43	\$251.04	IT